

### CENTRAL CALGARY Transmission Line Replacement

#### Newsletter Map 2.83L North Route - Primarily Underground

#### Legend

##### Potential Transmission Structures

- Self-Supporting Steel Monopole
- Riser Structure (Typically a Self-Supporting Steel Monopole)
- Underground Vault

##### Potential Transmission Routes

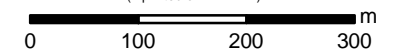
- ▬ Underground Route
- ▬ Overhead Route

##### Existing Infrastructure

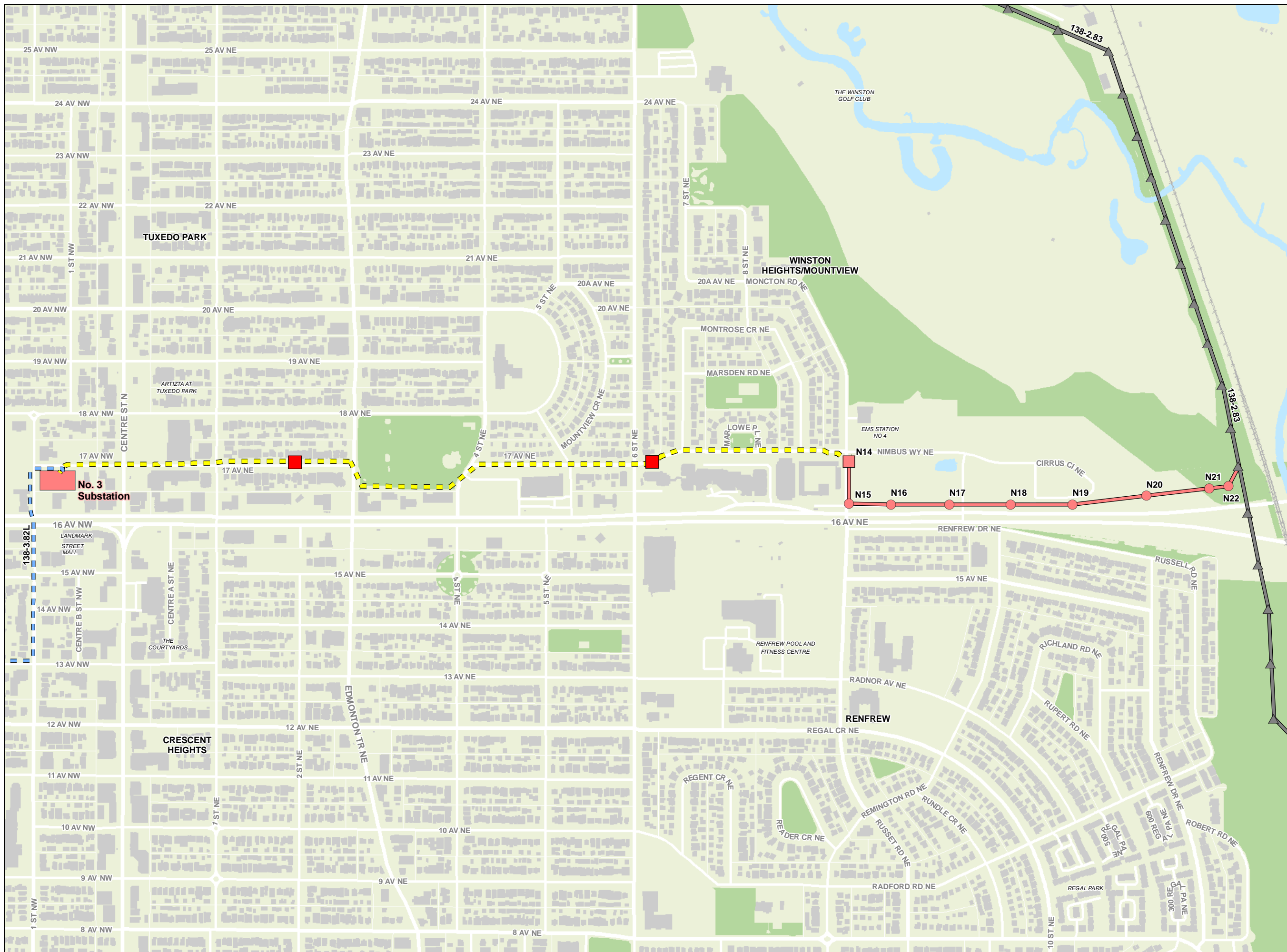
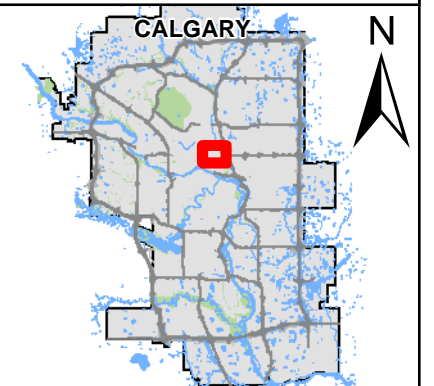
- ▲ Existing Transmission Wood Pole
- ▬ Existing Underground Transmission Line to be discontinued from operations
- ▬ Existing Overhead Transmission Line
- Existing ENMAX Substation
- ▬ Railway
- Buildings
- Hydrology
- Natural Area

Disclaimer: The data contained is for information purposes only. ENMAX Power Corporation does not make any representations or warranties as to the accuracy or completeness of the information contained herein or its verification. ENMAX does not guarantee that the information will not change at any time. This data is a representation of ENMAX owned and operated facilities only and may not depict the exact locations on the ground. This document is being furnished on a confidential basis and is not to be distributed to any other parties.

1:7,000  
(If printed on 11" x 17")



Data sources:  
Civil and Circuitry: ENMAX 2024; Landbase: City of Calgary 2024.



### CENTRAL CALGARY Transmission Line Replacement

#### Newsletter Map 2.83L North Route

#### Legend

##### Potential Transmission Structures

- Self-Supporting Steel Monopole
- Riser Structure (Typically a Self-Supporting Steel Monopole)
- Underground Vault
- ▲ Existing Transmission Wood Pole

##### Potential Transmission Routes

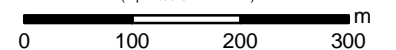
- Underground Route
- Overhead Route

##### Existing Infrastructure

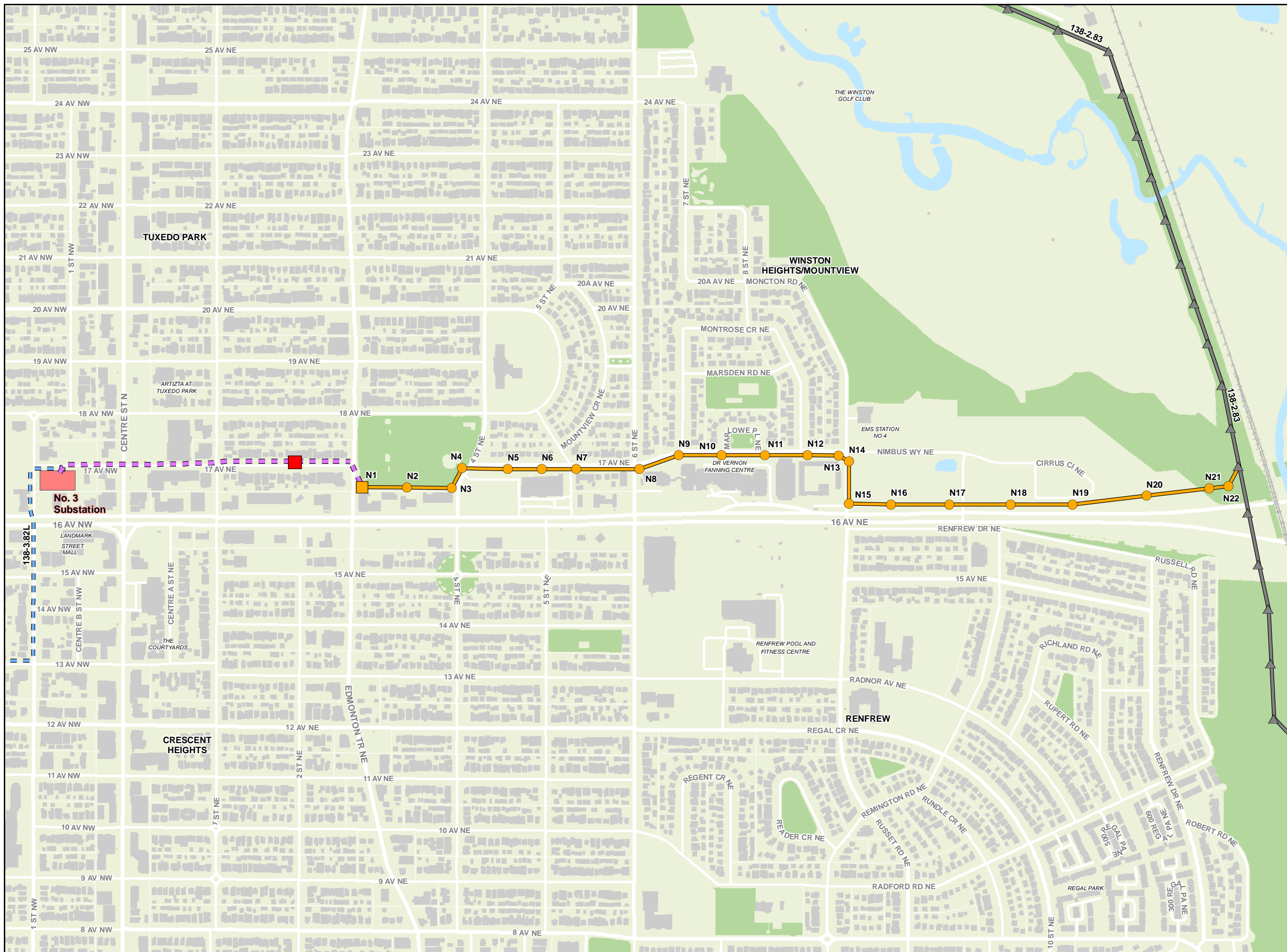
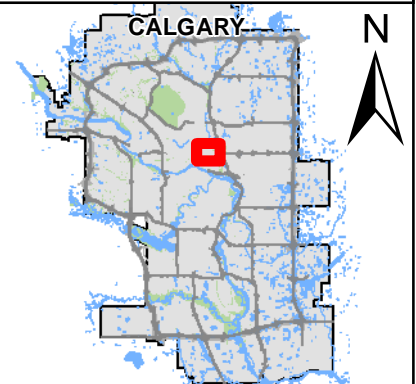
- Existing Underground Transmission
- Line to be discontinued from operations
- Existing Overhead Transmission Line
- Existing ENMAX Substation
- Railway
- Buildings
- Hydrology
- Natural Area

Disclaimer: The data contained is for information purposes only. ENMAX Power Corporation does not make any representations or warranties as to the accuracy or completeness of the information contained herein or its verification. ENMAX does not guarantee that the information will not change at any time. This data is a representation of ENMAX owned and operated facilities only and may not depict the exact locations on the ground. This document is being furnished on a confidential basis and is not to be distributed to any other parties.

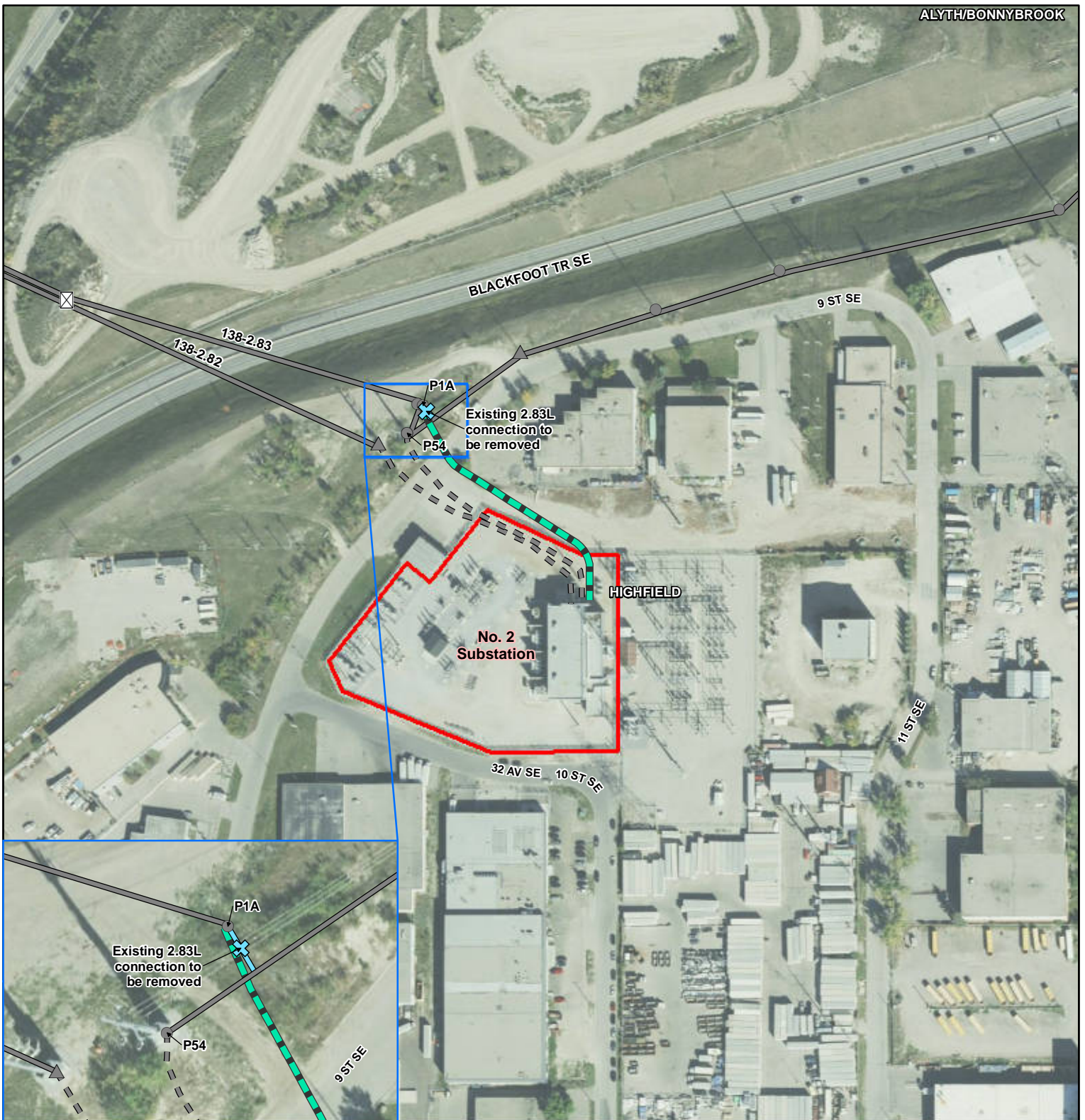
1:7,000  
(If printed on 11" x 17")



Data sources:  
Civil and Circuitry: ENMAX 2024; Landbase: City of Calgary 2024.







**CENTRAL CALGARY  
Transmission Line  
Replacement**

**Newsletter Map  
No. 2 Substation /  
Transmission Line  
2.83L**

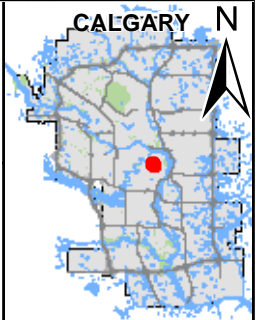
**Legend**

**Potential Transmission Routes**  
 2.85L Underground Route

**Existing Infrastructure**

- Existing 2.83L Connection to be Removed
- Existing Transmission Steel Monopole
- Existing Transmission Wood Pole

- Existing Transmission Structure
- Existing 2.83L Connection to be Removed
- Existing Overhead Transmission Line
- Existing Underground Transmission Line



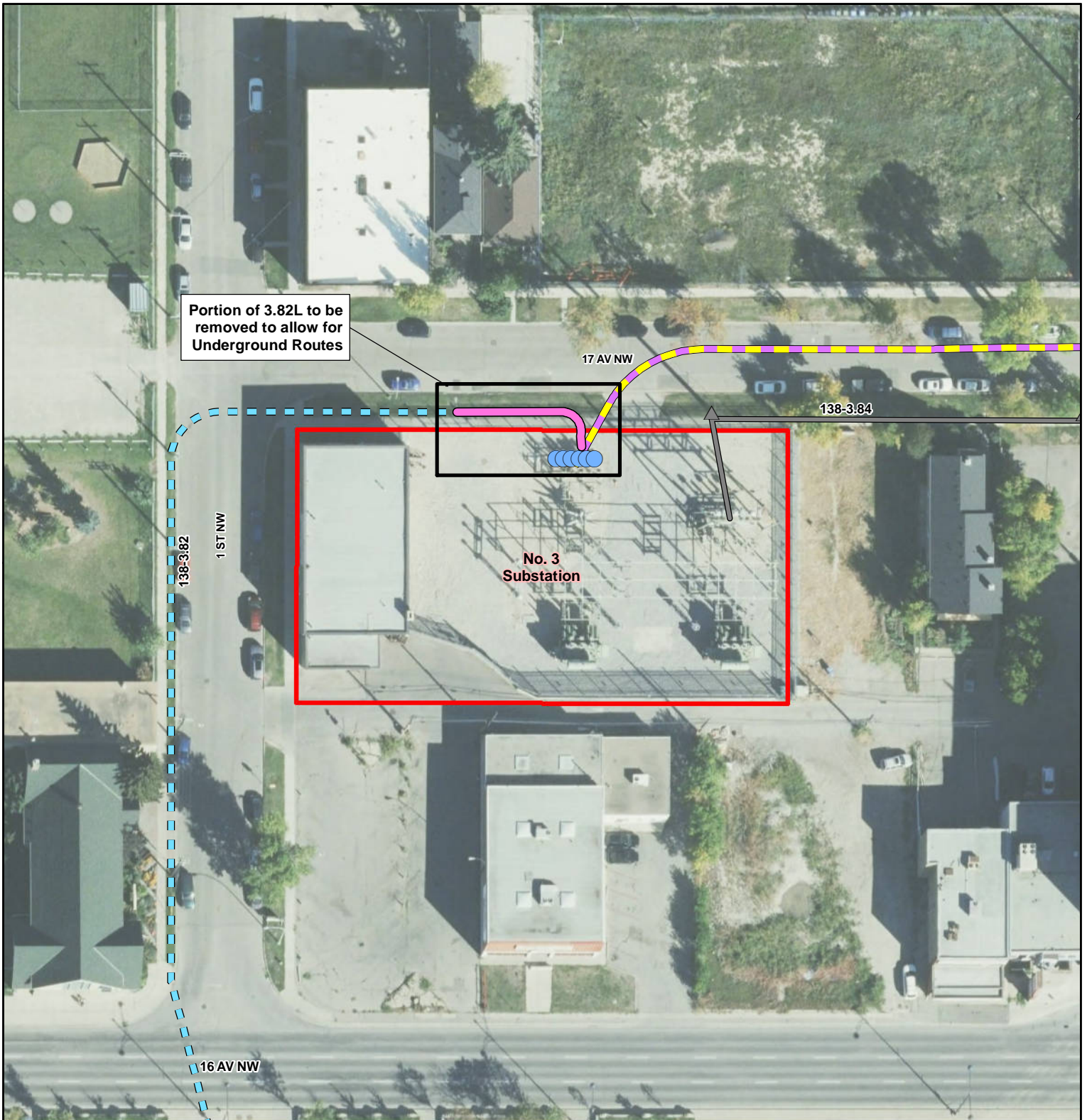
August 2024



The data contained is for information purposes only. ENMAX Power Corporation does not make any representations or warranties as to the accuracy or completeness of the information contained herein or its verification. ENMAX does not guarantee that the information will not change at any time. This data is a representation of ENMAX owned and operated facilities only and may not depict the exact locations on the ground. This document is being furnished on a confidential basis and is not to be distributed to any other parties.

Data sources:  
Civil and Circuity: ENMAX 2024;  
Landbase: City of Calgary 2024.





Portion of 3.82L to be removed to allow for Underground Routes

17 AV NW

138-3.84

No. 3 Substation

138-3.82

1ST NW

16 AV NW

**CENTRAL CALGARY  
Transmission Line  
Replacement**

**Newsletter Map  
No. 3 Substation /  
Transmission Lines  
2.83L and 3.82L**

**Legend**

**Potential Transmission Routes**

Underground Route

Line to be discontinued from operations

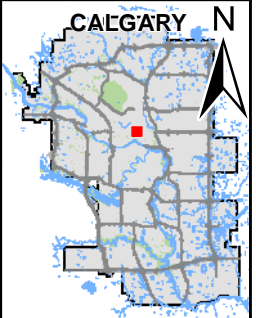
Existing Overhead Transmission Line

Existing Transmission Wood Pole

Existing Oil Pressure Reservoir Tanks to be removed to allow for Underground Routes

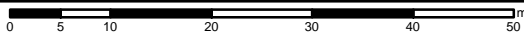
Portion of 3.82L to be removed to allow for Underground Routes

Existing ENMAX Substation



1:750

(If printed on 8.5" x 11")



August 2024



The data contained is for information purposes only. ENMAX Power Corporation does not make any representations or warranties as to the accuracy or completeness of the information contained herein or its verification. ENMAX does not guarantee that the information will not change at any time. This data is a representation of ENMAX owned and operated facilities only and may not depict the exact locations on the ground. This document is being furnished on a confidential basis and is not to be distributed to any other parties.

Data sources:  
Civil and Circuity: ENMAX 2024;  
Landbase: City of Calgary 2024.








**CENTRAL CALGARY  
Transmission Line  
Replacement  
Project**

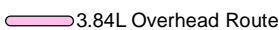
**Newsletter Map  
No. 13 Substation /  
Transmission Line  
3.84L**

**Legend**





**Potential Transmission Structures**

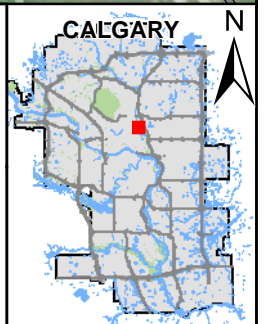
-  Route 3.84L, Self-Supporting Steel Monopole (No. 13 Substation)
-  Route 3.84L, Laminated Wood Pole to be replaced (No. 13 Substation)
-  Existing 2.83L Connection to be Removed (No. 2 Substation)

**Potential Transmission Routes**

-  3.84L Overhead Route

**Existing Infrastructure**

-  Existing Transmission Steel Monopole
-  Existing Transmission Wood Pole
-  Existing Overhead Transmission Line
-  Existing ENMAX Substation



August 2024



The data contained is for information purposes only. ENMAX Power Corporation does not make any representations or warranties as to the accuracy or completeness of the information contained herein or its verification. ENMAX does not guarantee that the information will not change at any time. This data is a representation of ENMAX owned and operated facilities only and may not depict the exact locations on the ground. This document is being furnished on a confidential basis and is not to be distributed to any other parties.

Data sources:  
Civil and Circuity: ENMAX 2024;  
Landbase: City of Calgary 2024.