

CENTRAL CALGARY Transmission Line Replacement

Newsletter Map 2.83L Route 1 South Route

Legend

Potential Transmission Structures

- Route 1, Self-Supporting Steel Monopole
- Route 1, Riser Structure (Typically a Self-Supporting Steel Monopole)
- ▲ Route 1, Wood Pole or Laminated Wood Pole (Replacing Existing Distribution Wood Pole)
- Underground Vault

Potential Transmission Routes

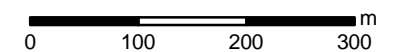
- Underground Route 1
- Overhead Route 1

Existing Infrastructure

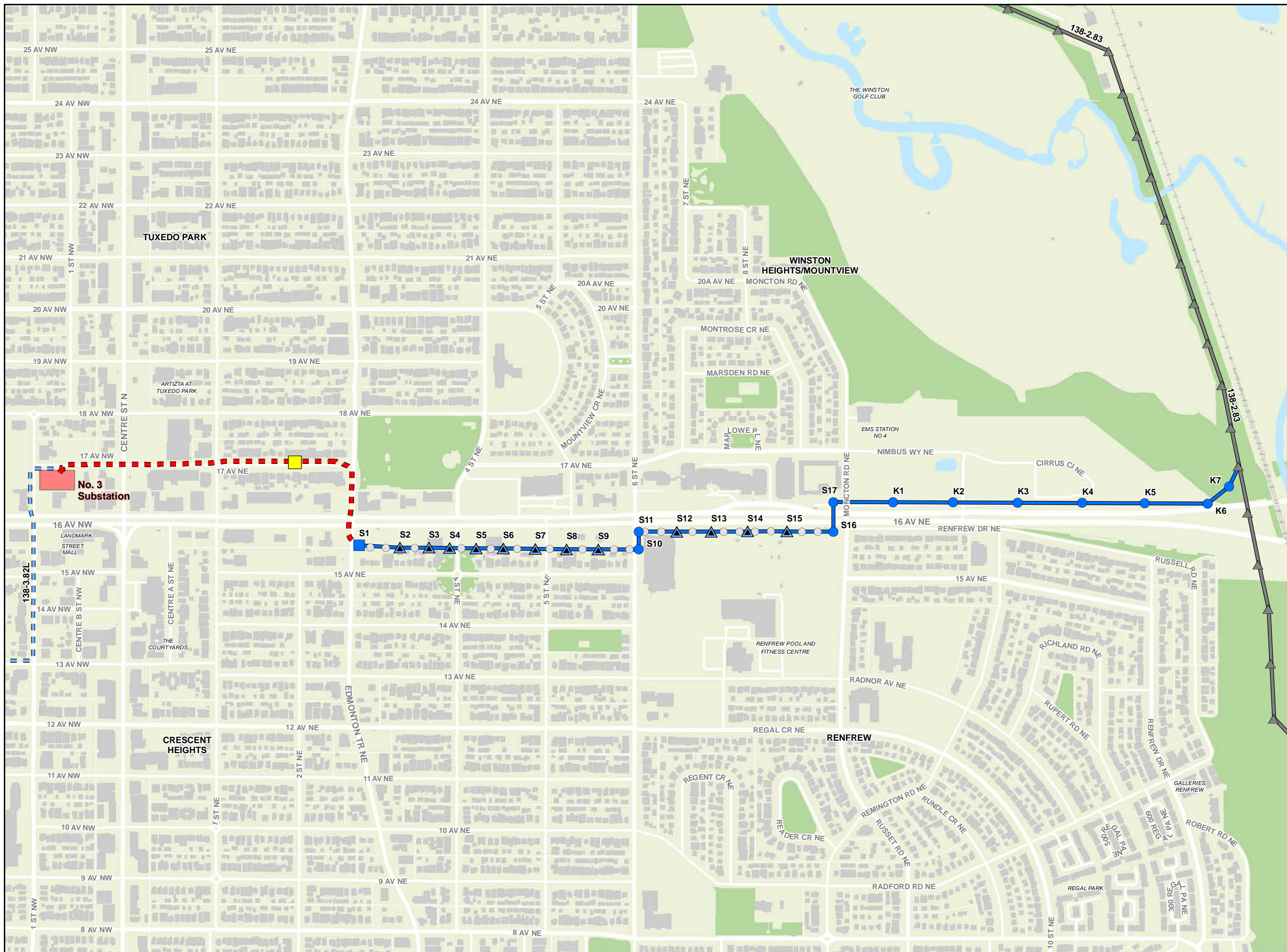
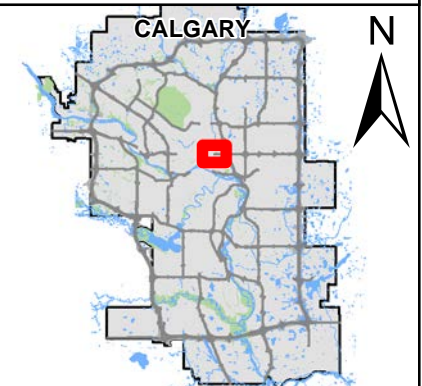
- Existing Distribution Wood Pole
- ▲ Existing Transmission Wood Pole
- Existing Underground Transmission
- Line to be discontinued from operations
- Existing Overhead Transmission Line
- Existing ENMAX Substation
- Railway
- Buildings
- Hydrology
- Natural Area

Disclaimer: The data contained is for information purposes only. ENMAX Power Corporation does not make any representations or warranties as to the accuracy or completeness of the information contained herein or its verification. ENMAX does not guarantee that the information will not change at any time. This data is a representation of ENMAX owned and operated facilities only and may not depict the exact locations on the ground. This document is being furnished on a confidential basis and is not to be distributed to any other parties.

1:7,000



Data sources:
Civil and Circuitry: ENMAX 2024; Landbase: City of Calgary 2024.



CENTRAL CALGARY
Transmission Line Replacement

Newsletter Map
2.83L Route 2
North Route

Legend

Potential Transmission Structures

- Route 2A, Self-Supporting Steel Monopole
- Route 2A, Riser Structure (Typically a Self-Supporting Steel Monopole)
- Route 2A, Self-Supporting Steel Monopole (Replacing Existing Distribution Wood Pole)
- Route 2A, Laminated Wood Pole (Replacing Existing Distribution Wood Pole)
- Underground Vault

Potential Transmission Routes

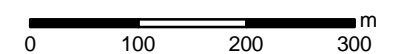
- Underground Route 2
- Overhead Route 2A

Existing Infrastructure

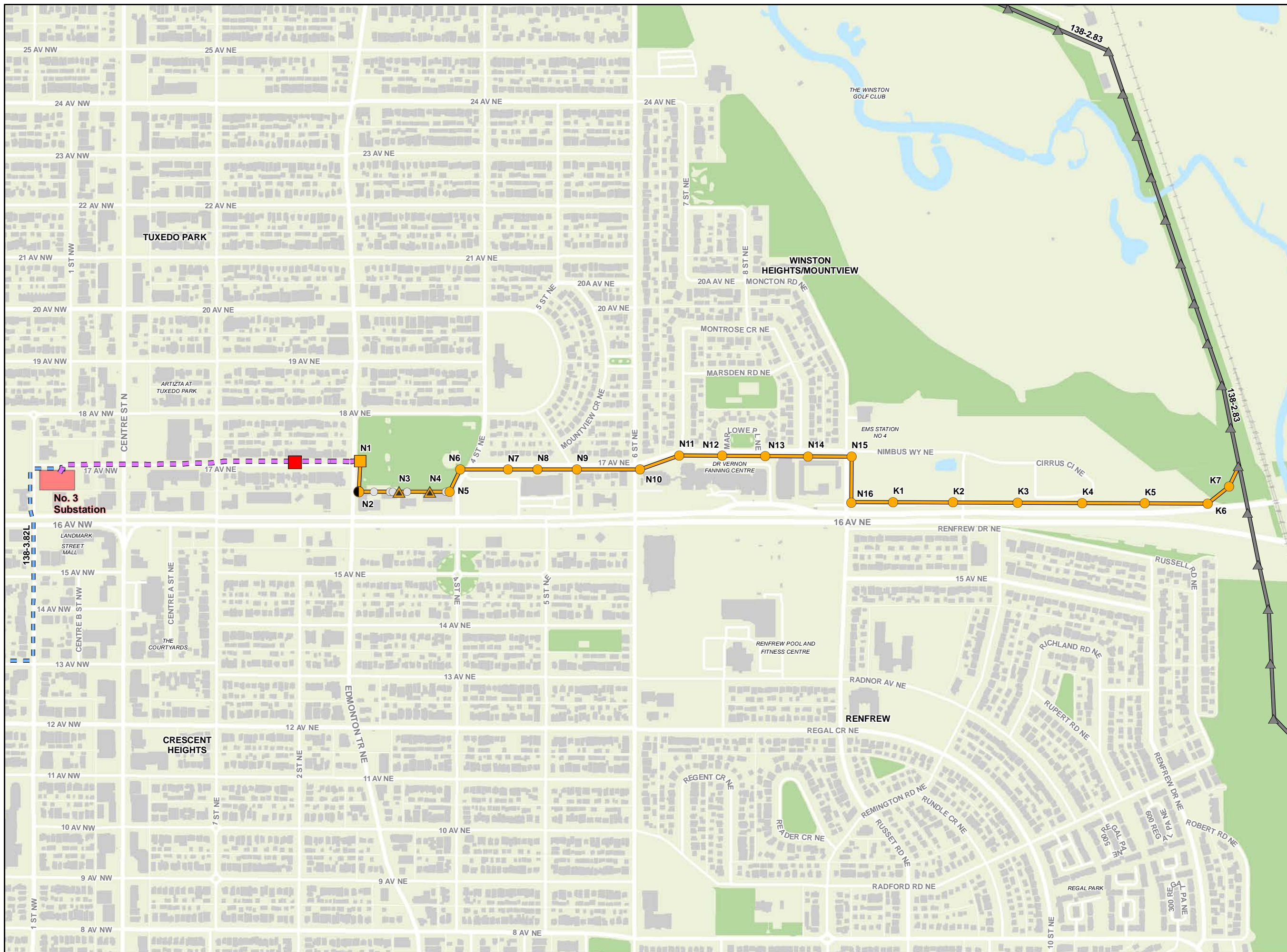
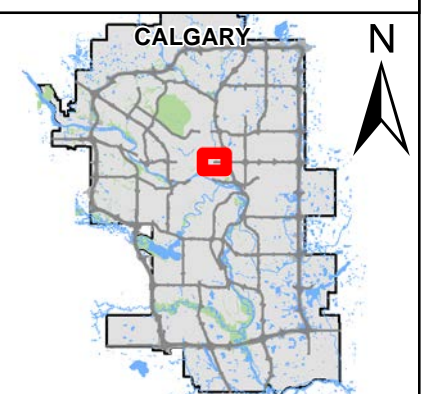
- Existing Distribution Wood Pole
- Existing Transmission Wood Pole
- Existing Underground Transmission Line to be discontinued from operations
- Existing Overhead Transmission Line
- Existing ENMAX Substation
- Railway
- Buildings
- Hydrology
- Natural Area

Disclaimer: The data contained is for information purposes only. ENMAX Power Corporation does not make any representations or warranties as to the accuracy or completeness of the information contained herein or its verification. ENMAX does not guarantee that the information will not change at any time. This data is a representation of ENMAX owned and operated facilities only and may not depict the exact locations on the ground. This document is being furnished on a confidential basis and is not to be distributed to any other parties.

1:7,000



Data sources:
Civil and Circuitry: ENMAX 2024; Landbase: City of Calgary 2024.



CENTRAL CALGARY
Transmission Line Replacement

Newsletter Map
2.83L Route 3
North Route - Primarily Underground

Legend

Potential Transmission Structures

- Route 3, Self-Supporting Steel Monopole
- Route 3, Riser Structure (Typically a Self-Supporting Steel Monopole)
- Underground Vault

Potential Transmission Routes

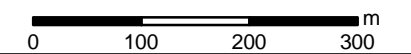
- Underground Route 3
- Overhead Route 3

Existing Infrastructure

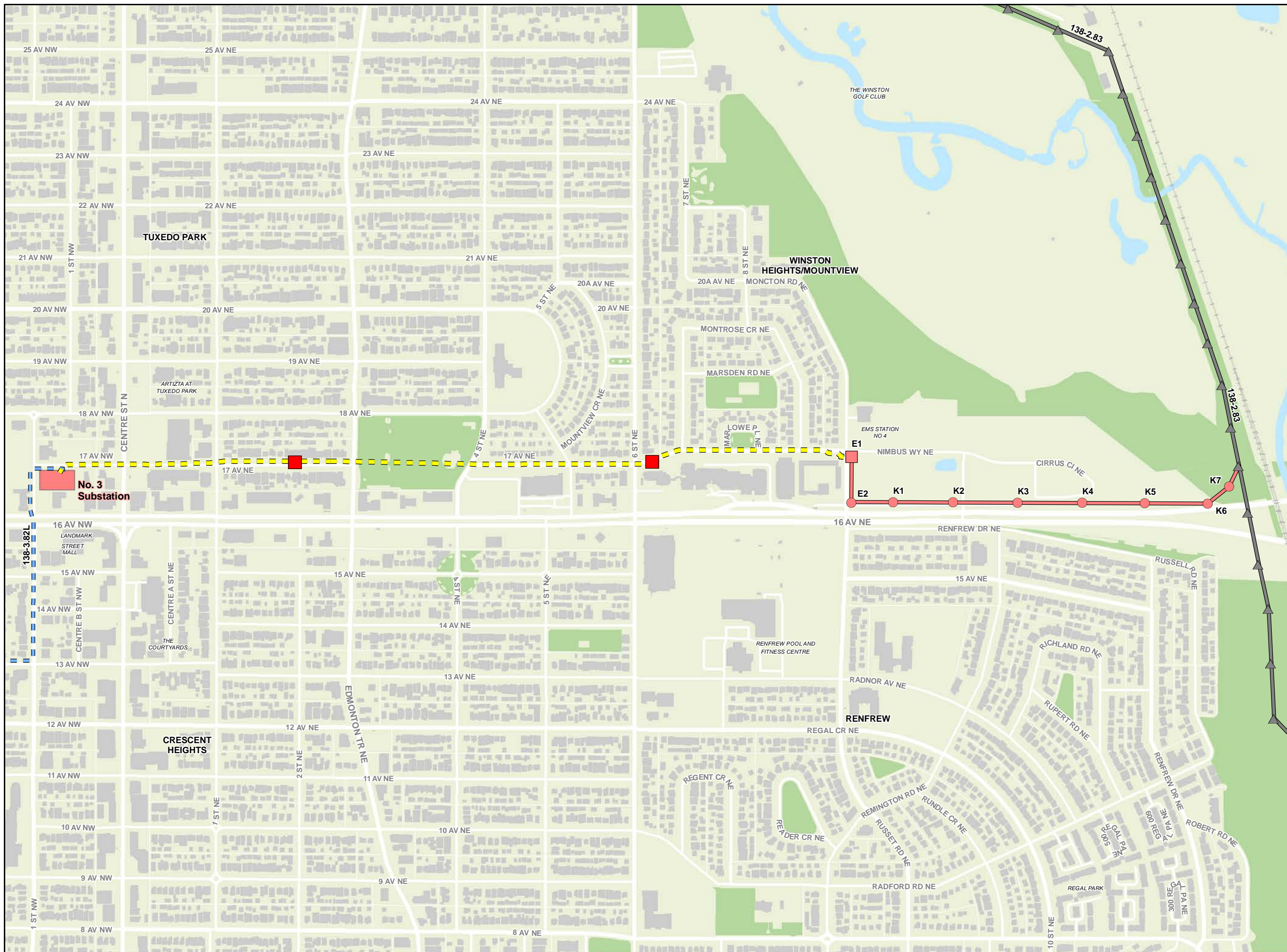
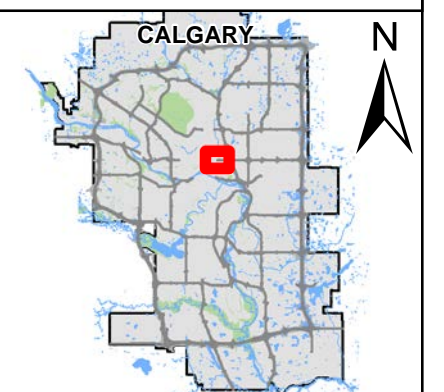
- Existing Transmission Wood Pole
- Existing Underground Transmission
- Line to be discontinued from operations
- Existing Overhead Transmission Line
- Existing ENMAX Substation
- Railway
- Buildings
- Hydrology
- Natural Area

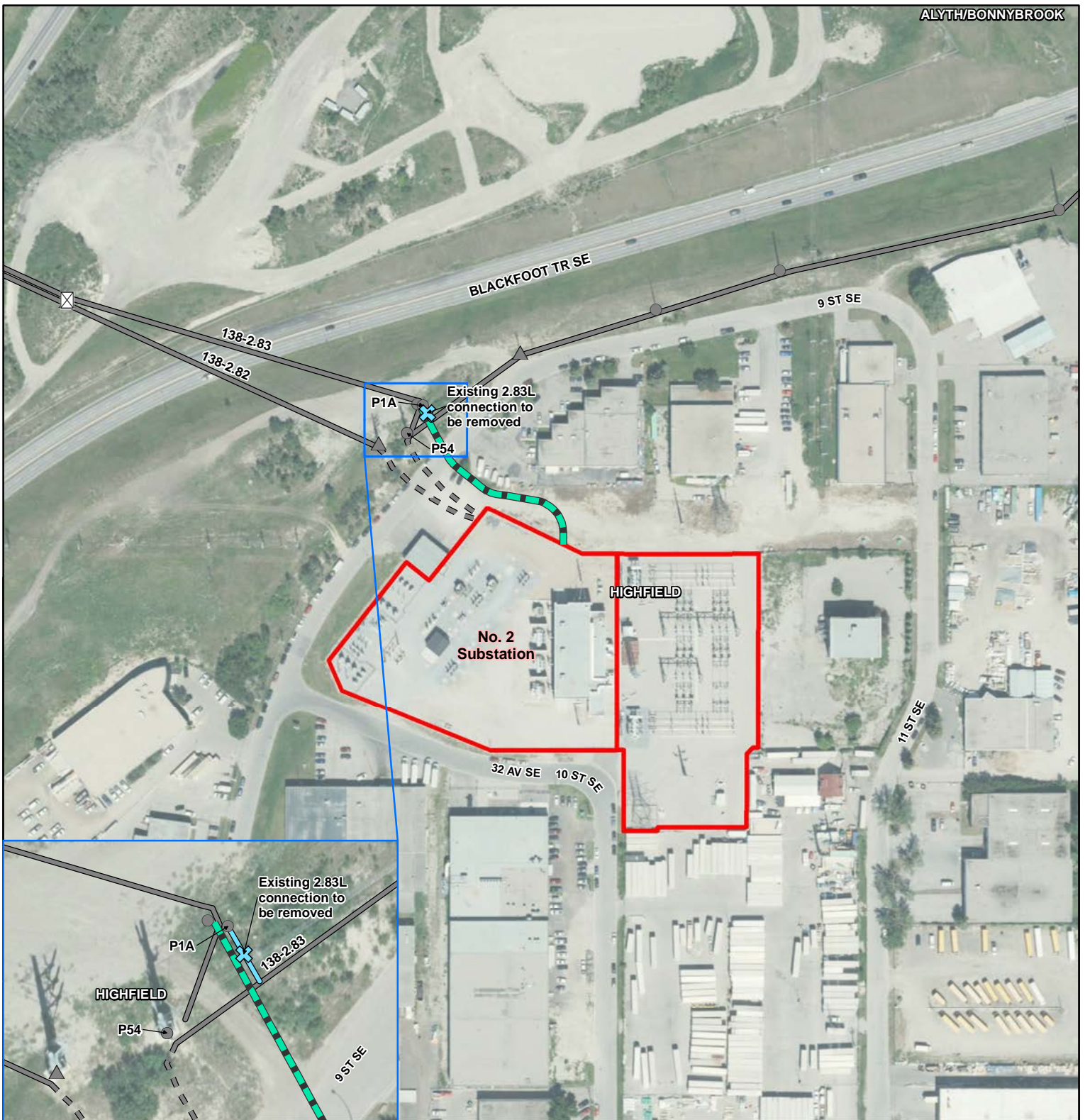
Disclaimer: The data contained is for information purposes only. ENMAX Power Corporation does not make any representations or warranties as to the accuracy or completeness of the information contained herein or its verification. ENMAX does not guarantee that the information will not change at any time. This data is a representation of ENMAX owned and operated facilities only and may not depict the exact locations on the ground. This document is being furnished on a confidential basis and is not to be distributed to any other parties.

1:7,000



Data sources:
Civil and Circuitry: ENMAX 2024; Landbase: City of Calgary 2024.





**CENTRAL CALGARY
Transmission Line
Replacement**

**Newsletter Map
No. 2 Substation /
Transmission Line
2.83L**

Legend

Potential Transmission Routes

2.85L Underground Route

Existing Infrastructure

Existing 2.83L Connection to be Removed

Existing Transmission Steel Monopole

Existing Transmission Wood Pole

Existing Transmission Structure

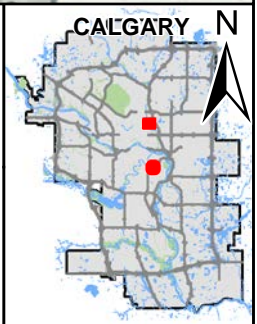
Existing 2.83L Connection to be Removed

Existing Overhead Transmission Line

Existing Underground Transmission Line

Existing ENMAX Substation

1:2,500

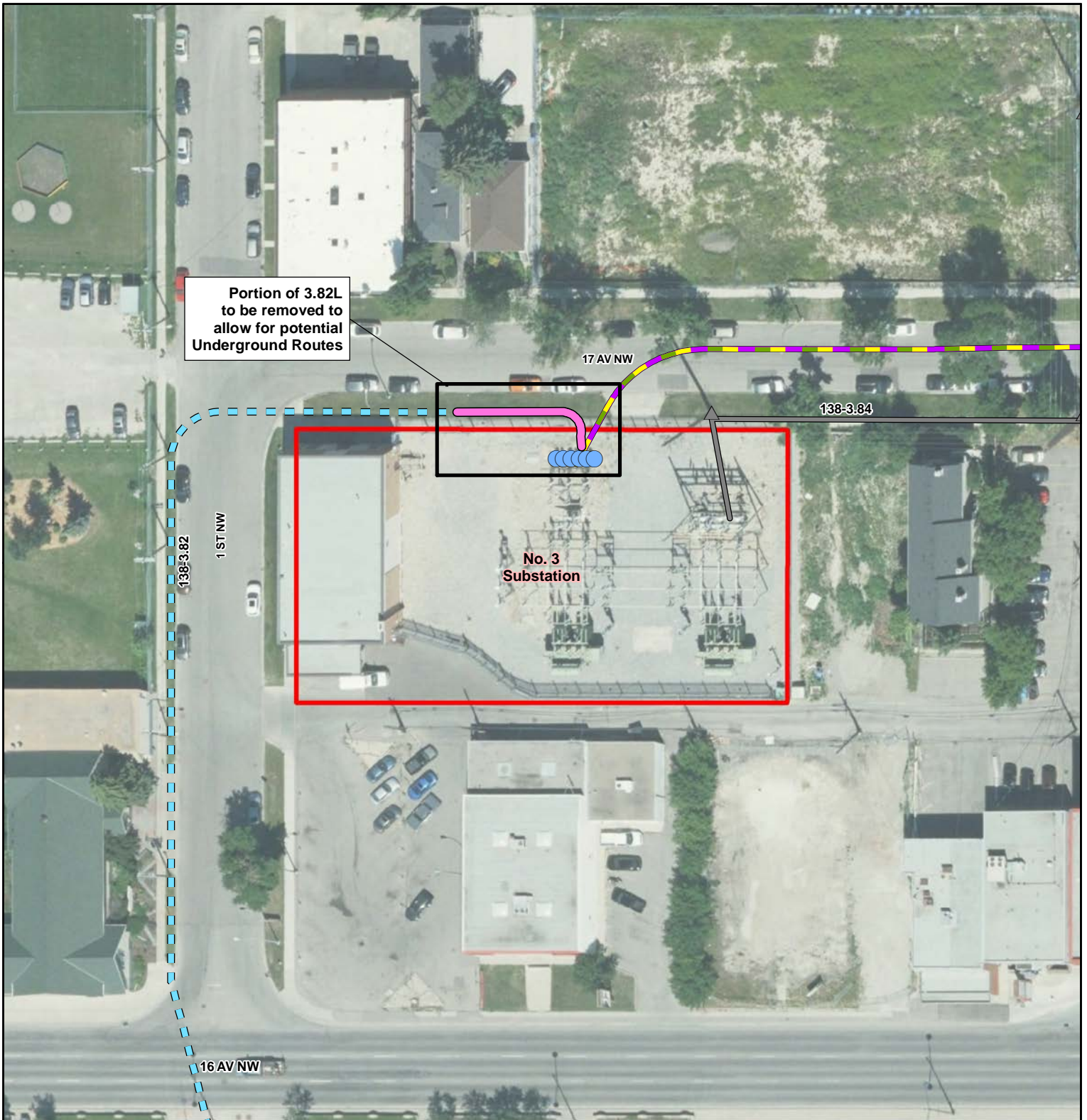


March 2024



The data contained in is for information purposes only. ENMAX Power Corporation does not make any representations or warranties as to the accuracy or completeness of the information contained herein or its verification. ENMAX does not guarantee that the information will not change at any time. This data is a representation of ENMAX owned and operated facilities only and may not depict the exact locations on the ground. This document is being furnished on a confidential basis and is not to be distributed to any other parties.

Data sources:
Civil and Circuitry: ENMAX 2024;
Landbase: City of Calgary 2024.



**CENTRAL CALGARY
Transmission Line
Replacement**

**Newsletter Map
No. 3 Substation /
Transmission Lines
2.83L and 3.82L**

Legend

Potential Transmission Routes

— Potential Underground Routes 1, 2, and 3

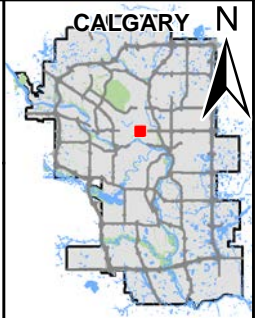
Existing Infrastructure

- ▲ Existing Transmission Wood Pole
- Existing Oil Pressure Reservoir Tanks to be removed to allow for potential Underground Routes

— Existing Underground Transmission
— Line to be discontinued from operations

— Existing Overhead Transmission Line
— Portion of 3.82L to be removed to allow for potential Underground Routes

▭ Existing ENMAX Substation



1:750



March 2024



The data contained is for information purposes only. ENMAX Power Corporation does not make any representations or warranties as to the accuracy or completeness of the information contained herein or its verification. ENMAX does not guarantee that the information will not change at any time. This data is a representation of ENMAX owned and operated facilities only and may not depict the exact locations on the ground. This document is being furnished on a confidential basis and is not to be distributed to any other parties.

Data sources:
Civil and Circuity: ENMAX 2024;
Landbase: City of Calgary 2024.






**CENTRAL CALGARY
Transmission Line
Replacement
Project**

**Newsletter Map
No. 13 Substation /
Transmission Line
3.84L**

Legend


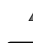


Potential Transmission Structures

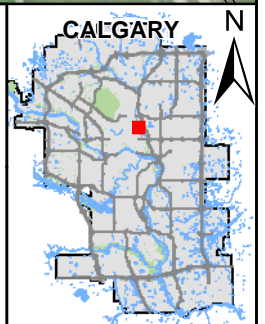
-  Route 3.84L, Self-Supporting Steel Monopole (No. 13 Substation)
-  Route 3.84, Steel Monopole (Replacing Existing Laminated Wood Pole - No. 13 Substation)
-  Existing 2.83L Connection to be Removed (No. 2 Substation)

Potential Transmission Routes

-  3.84L Overhead Route

Existing Infrastructure

-  Existing Transmission Steel Monopole
-  Existing Transmission Wood Pole
-  Existing Overhead Transmission Line
-  Existing ENMAX Substation



1:2,500



March 2024



The data contained is for information purposes only. ENMAX Power Corporation does not make any representations or warranties as to the accuracy or completeness of the information contained herein or its verification. ENMAX does not guarantee that the information will not change at any time. This data is a representation of ENMAX owned and operated facilities only and may not depict the exact locations on the ground. This document is being furnished on a confidential basis and is not to be distributed to any other parties.

Data sources:
Civil and Circuity: ENMAX 2024;
Landbase: City of Calgary 2024.