

Welcome

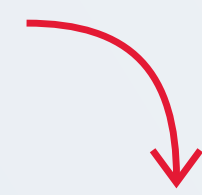
→ No. 27 Substation Rebuild
Project **Open House**

The project aims to replace aging substation equipment
that helps power homes and businesses in your area.

What to expect at this open house



Today you can:



Learn about the project

including what's needed, where we are at in the planning process.

Share your feedback

on what's important to your community - your input is valuable to us.

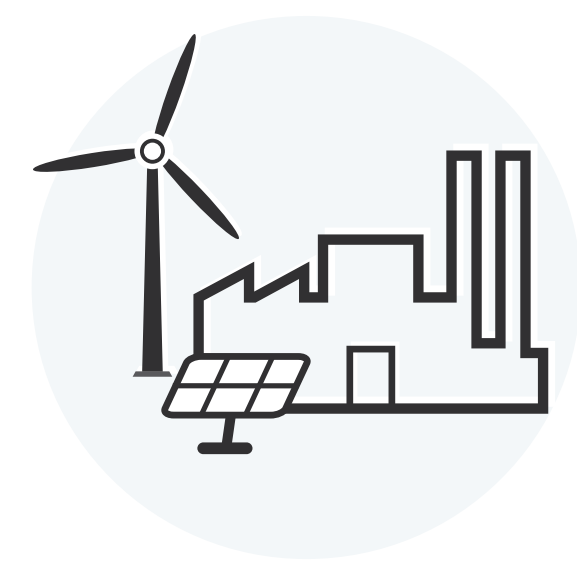
Talk to project experts

about your questions.



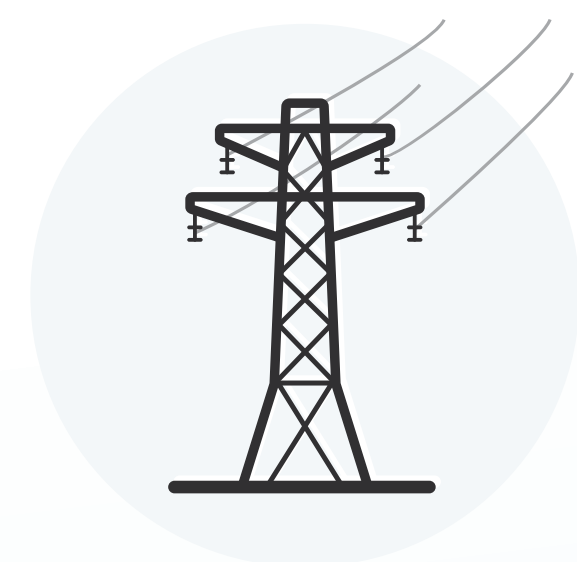
Your input will help us better understand community priorities and shape our planning.

Key components of the **electricity grid**



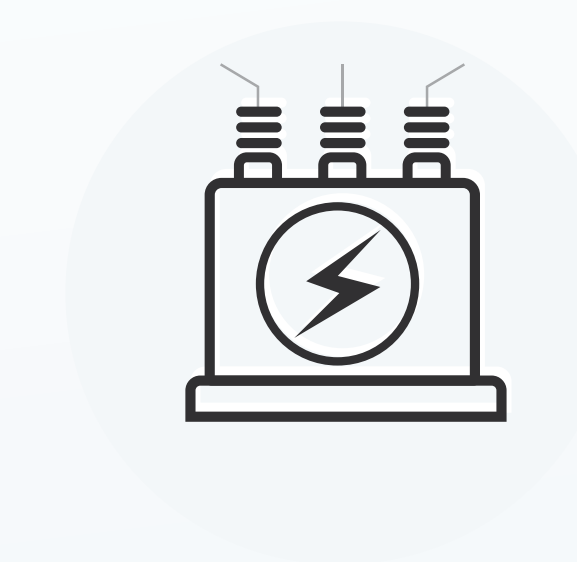
→ **Generation**

In Alberta, electricity is created at natural gas fuelled power plants or solar and wind farms. Alberta's electricity grid has been coal free since June 2024.



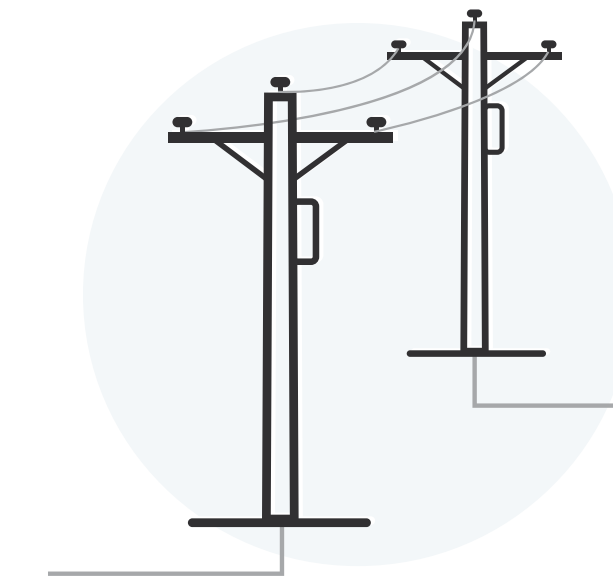
→ **Transmission lines**

The transmission system consists of high-voltage power lines that transport large quantities of power over long distances from generators to substations.



→ **Substations**

From the transmission line, electricity passes through a substation. Inside the substation transformers lower the voltage of the electricity to prepare it for use in homes and businesses.



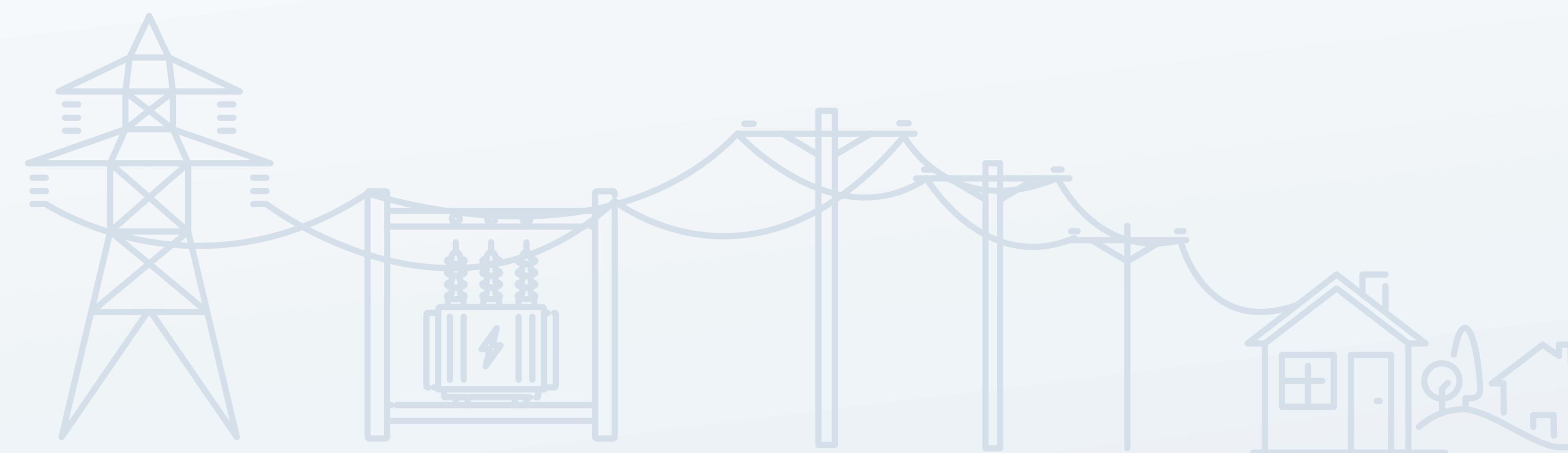
→ **Distribution lines**

The distribution system moves electricity to homes and businesses using overhead or underground lines.



→ **Transformers**

Before the electricity can be used at a home or business it runs through another transformer either on the pole or the ground that lowers the voltage so it can be used by lights, appliances, electronics and other devices.



How projects are **funded**



ELECTRICITY

DAYS BILLED:	32	RATE
METER#:	A00000	ERFDL

New Charges

Electric Energy Charges

Energy Charge
(Oct 27 to Nov 27)

Administration Charge
(Oct 27 to Nov 27)

Delivery Charges
(Oct 27 to Nov 27)

Transmission Charge

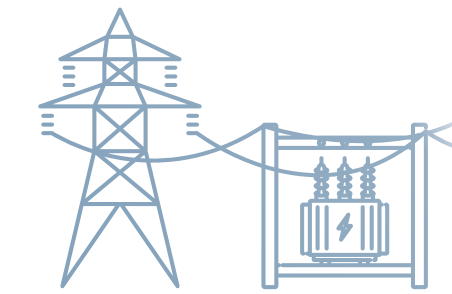
Distribution Charge

Balancing Pool Allocation

On your electricity bill, you'll see fees for Transmission and Distribution in addition to charges for power you use.

These fees are used to fund, construct, and maintain the equipment that delivers electricity across the province and to your home or business.

Transmission fees



The transmission system uses high-voltage power lines that carry electricity long distances from generators to substations.

- Every two to three years, electricity providers submit their transmission system costs to the Alberta Utilities Commission (AUC) for approval.
- The AUC reviews these costs and approves only those needed to provide safe and reliable service to Albertans.

Distribution fees



The distribution system uses local overhead and underground lines to move electricity to homes and businesses.

- Electricity providers submit their distribution system costs to the AUC for approval, usually every five years.
- The AUC reviews these costs and approves only those needed to provide safe and reliable services to customers.

Steps we take to protect **the environment**



Each project is reviewed during the planning phase to help outline environmental effects.

Identify
potential issues



Prevent or reduce
environmental impact



Restore habitat
and work areas



Monitor recovery

Guidance and standards

Every project follows environmental legislation, regulations, guidelines, policies and operating approvals.

This includes **obtaining all required approvals and permits** from regulatory bodies including:

- The City of Calgary
- Alberta Environment and Protected Areas
- Fisheries and Oceans Canada
- Environment and Climate Change Canada

If you have an environmental question

Please speak to a member of our team here or visit **enmax.com/projects** to learn more.

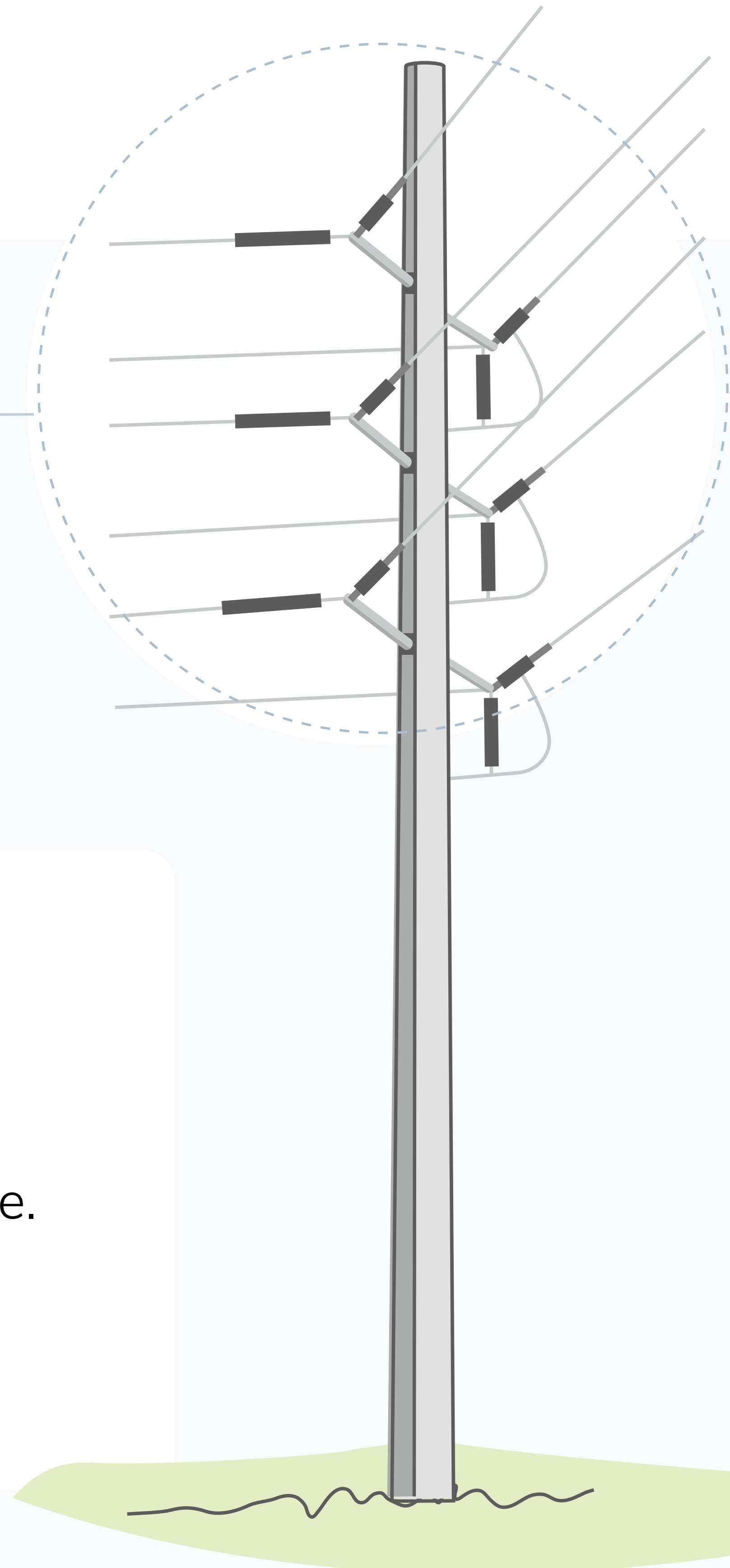
Electromagnetic fields (**EMF**)



We are committed to staying informed about any changes to research or guidelines related to electromagnetic fields (EMFS) and continuing to share information and insights with our communities.



60Hz
RANGE



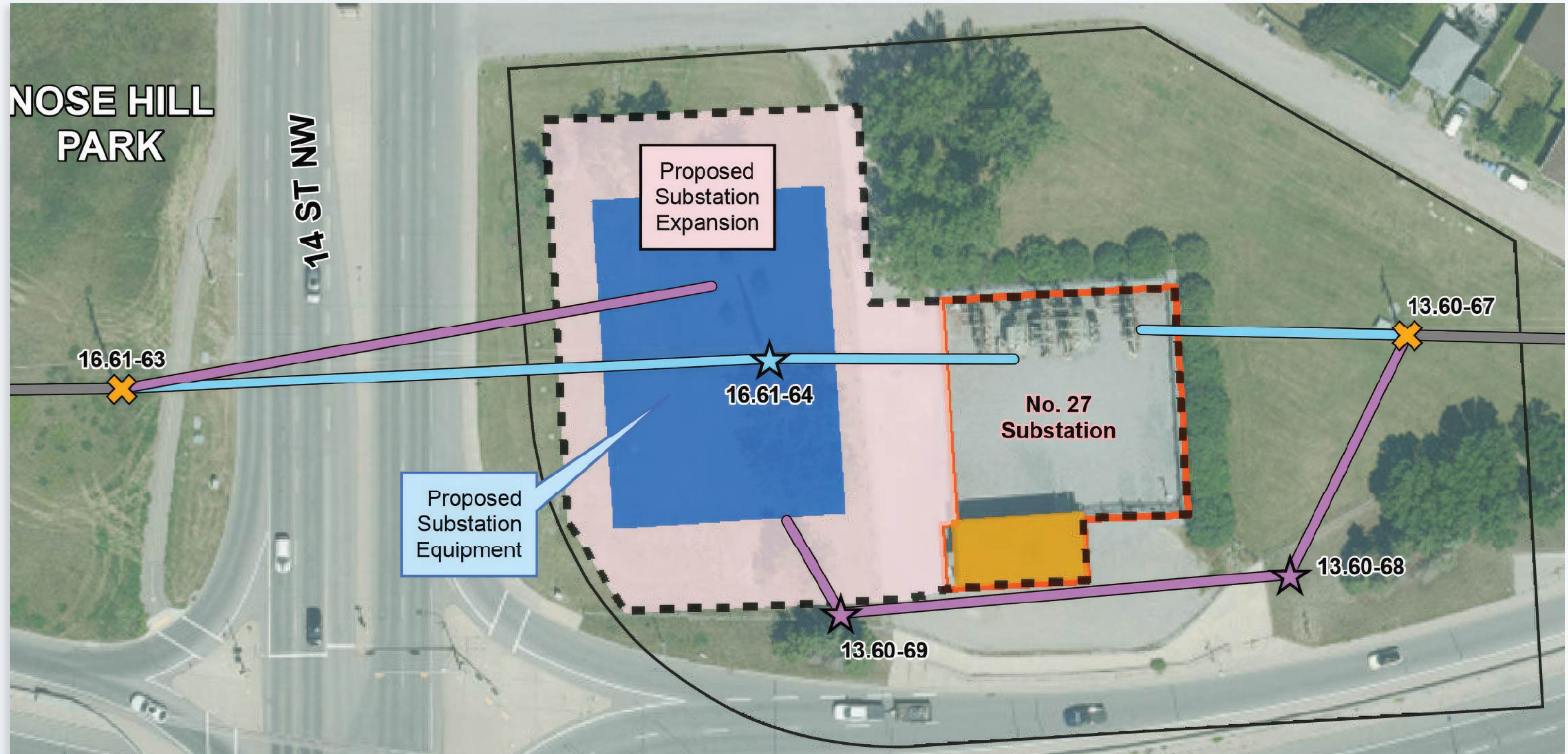
Fast facts

- EMFs are found anywhere electricity is used.
- EMFs associated with common household appliances and electronics are considered extreme low frequency or below 300 hertz (Hz), power lines are usually in the 60 Hz range.
- The World Health Organization and Health Canada have not found any conclusive evidence that typical exposure to low frequency EMFs from power lines is harmful.

What if I still have questions?

Speak to a member of our team here at the open house. Or visit enmax.com/emf for helpful links and any updates about EMF.

No. 27 Substation Rebuild **project map**



	Transmission structures	Transmission routes	Existing substation fence-line	Existing substation building
	Proposed steel monopole	Existing overhead transmission line	Proposed fence-line expansion	Proposed substation expansion
	Existing wood pole to be replaced with steel monopole	Existing overhead transmission line to be relocated	Proposed substation equipment	ENMAX property boundary
	Existing steel monopole to be removed	Proposed transmission line alignment		

Disclaimer: The data contained is for information purposes only. ENMAX Power Corporation does not make any representations or warranties as to the accuracy or completeness of the information contained herein or its verification. ENMAX does not guarantee that the information will not change at any time. This data is a representation of ENMAX owned and operated facilities only and may not depict the exact locations on the ground.

Data sources: Civil and Circuitry; ENMAX 2026; Landbase: City of Calgary 2026. Copyright © The City of Calgary. All rights reserved. Use subject to License.

No. 27 Substation Rebuild Project

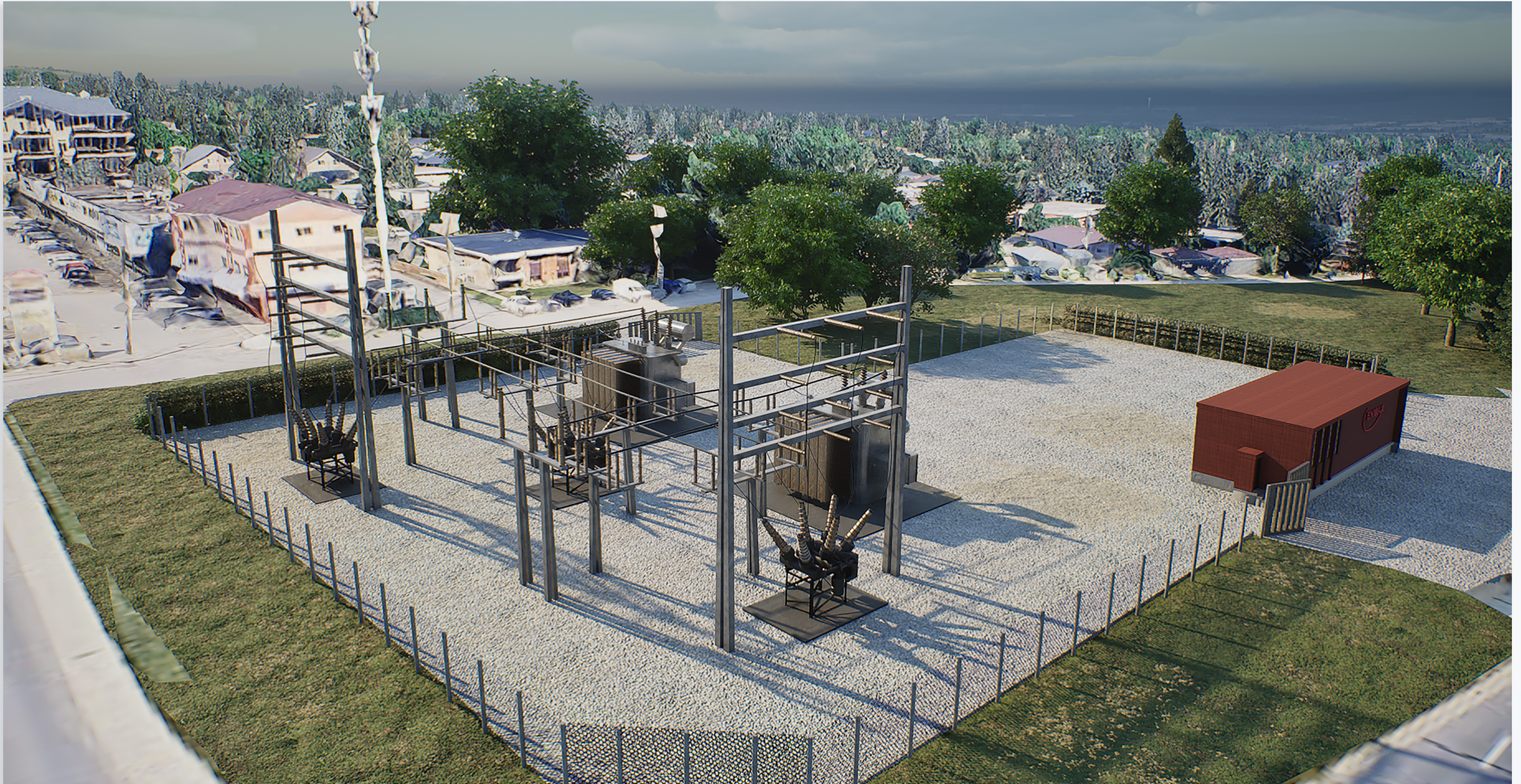
Northwest view



Artist rendering – subject to final design

No. 27 Substation Rebuild Project

Southwest view



Artist rendering – subject to final design

Transmission structures

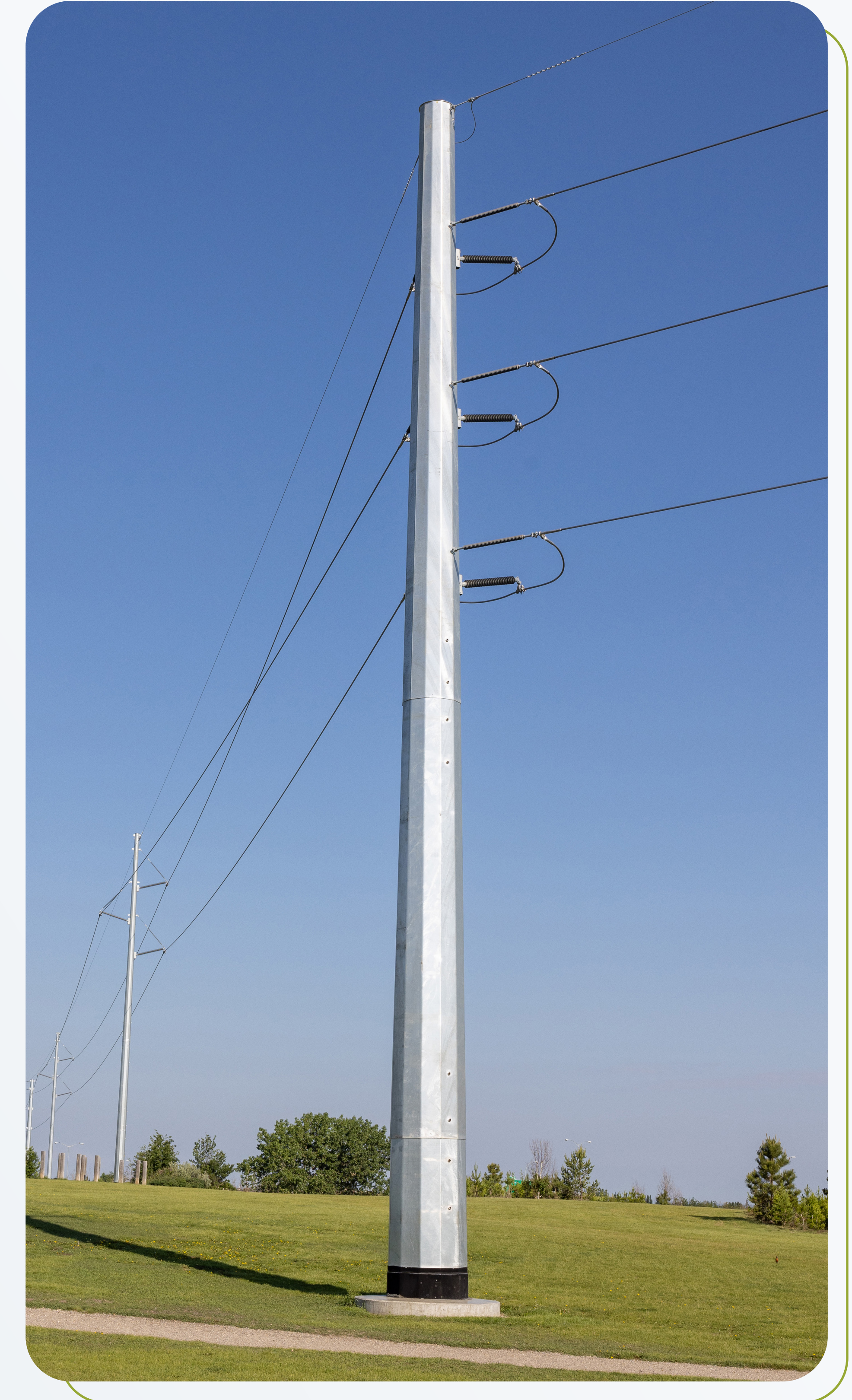


Circuit breaker



Transformer

Subject to the detailed design, the existing transmission structures (ranging in height from 14 to 22 meters) will be replaced with self-supporting steel monopoles. These transmission structures are expected to be between approximately 20 to 24 meters in height, as required to meet design and safety standards.



Self-supporting steel monopole