

ENMAX Power at a glance

About us:

For more than 100 years, ENMAX has delivered electricity to Calgary, beginning as a City department called The City of Calgary Electric System. Today, ENMAX Power is Calgary's electricity transmission and distribution provider, supplying power to homes and businesses across the city.

Our role:

ENMAX Power operates and maintains Calgary's electricity grid, including the local distribution system and the high-voltage transmission system that brings electricity into the city.

FAST FACTS



Customers served: We deliver electricity to **1.6 million Calgarians** across more than 580,000 metered sites in Calgary and surrounding communities.



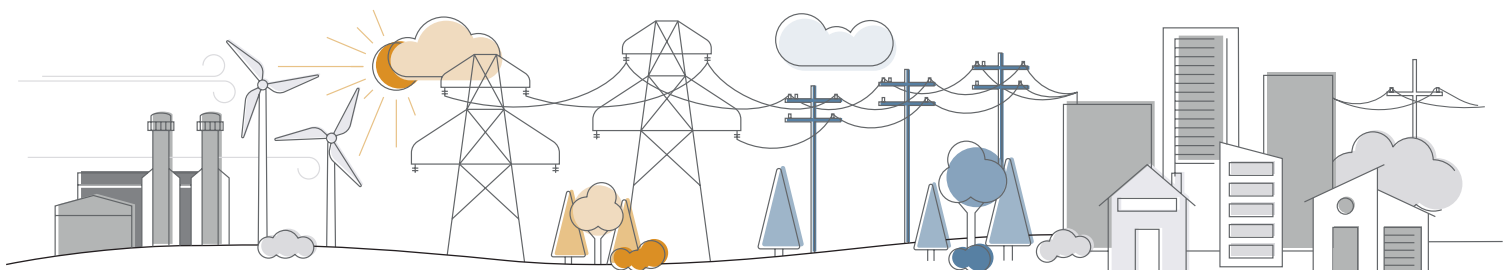
Transmission System: We maintain a **355 km** network of high-voltage lines within Calgary that moves electricity from generation facilities to local areas.

Distribution System: More than **8,600 km** of distribution lines deliver electricity directly to homes and businesses.



Substations: We operate **40 substations** that convert high-voltage electricity from the transmission system to lower voltages suitable for residential and commercial use.

Secondary Network: We operate one of Canada's largest underground secondary networks, supporting the reliability of downtown Calgary. The network includes **421 vaults** and **982 transformers**.



Key projects and investments

Supporting Calgary's growth:

In response to the city's expanding housing market, ENMAX Power completed over **21,000** new meter connections and connected more than **7,000** new lots to the grid in 2024 to support both residential and commercial development.

Grid reliability investments:

ENMAX Power invests more than **\$400 million** annually to maintain and enhance grid reliability. These upgrades include cable and pole replacements, as well as ongoing substation maintenance.



Substation No. 1 Replacement

Substation No. 1 was built in 1912 to power the early streetlights and streetcar rail system in the city. Today, it supplies power to approximately 45 per cent of the downtown Calgary geographic area, equating to more than half of ENMAX Power's downtown customers. This critical infrastructure is being replaced to ensure continued reliability for years to come.