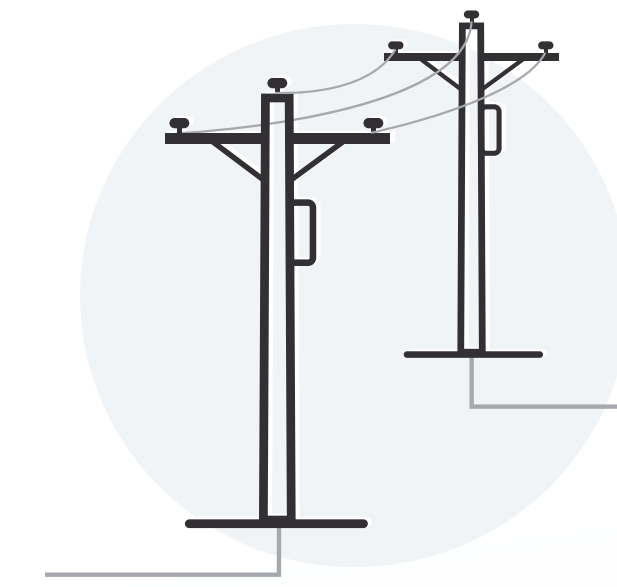


Key components of the **electricity grid**



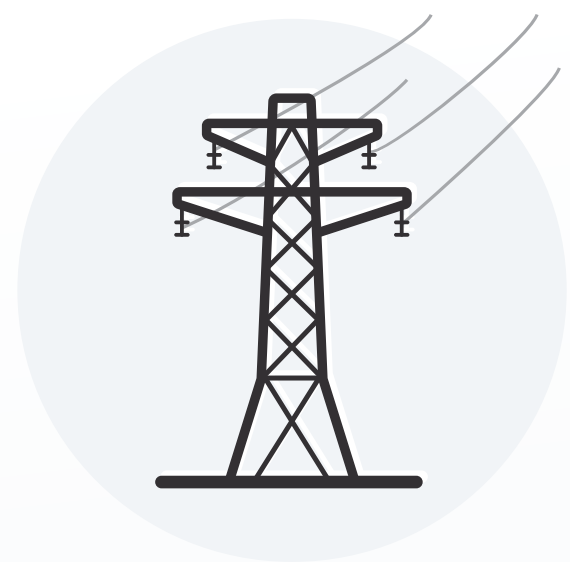
→ **Generation**

In Alberta, electricity is created at natural gas fuelled power plants or solar and wind farms. Alberta's electricity grid has been coal free since June 2024.



→ **Distribution lines**

The distribution system moves electricity to homes and businesses using overhead or underground lines.



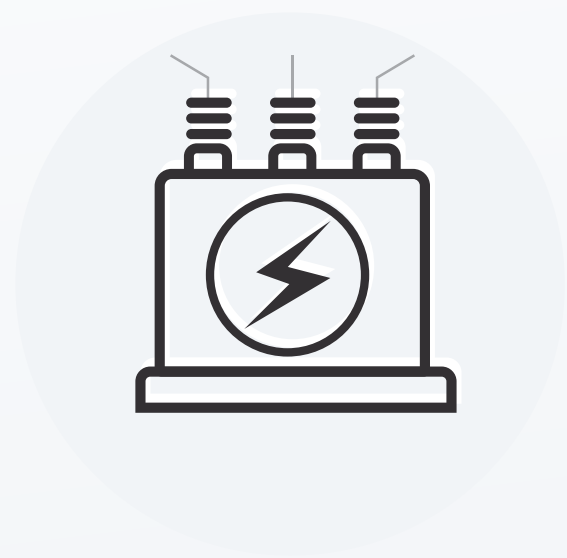
→ **Transmission lines**

The transmission system consists of high-voltage power lines that transport large quantities of power over long distances from generators to substations.



→ **Transformers**

Before the electricity can be used at a home or business it runs through another transformer either on the pole or the ground that lowers the voltage so it can be used by lights, appliances, electronics and other devices.



→ **Substations**

From the transmission line, electricity passes through a substation. Inside the substation transformers lower the voltage of the electricity to prepare it for use in homes and businesses.

