



**CENTRAL CALGARY  
Transmission Line  
Replacement**

**Newsletter Map  
No. 13 Substation /  
Transmission Line  
3.84L**

**Legend**

**Potential Transmission Structures**

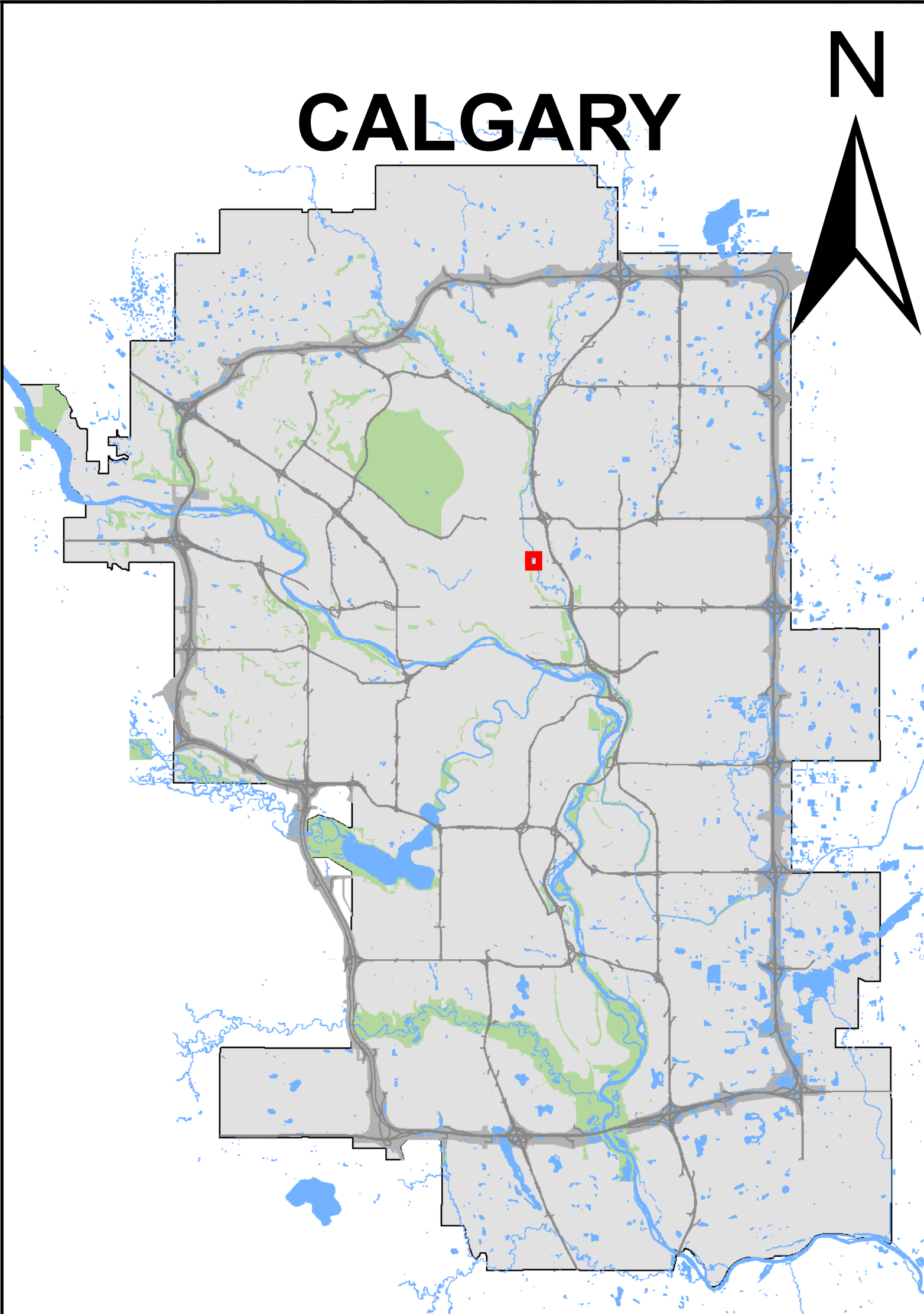
- Route 3.84L, Self-Supporting Steel Monopole (No. 13 Substation)
- ▲ Route 3.84L, Laminated Wood Pole to be replaced (No. 13 Substation)

**Potential Transmission Routes**

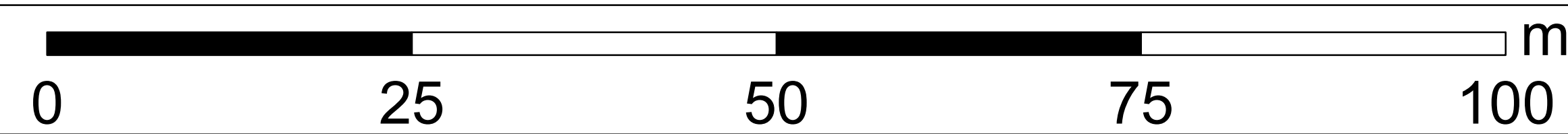
- Overhead Route 3.84L (No. 13 Substation)

**Existing Infrastructure**

- ▲ Existing Transmission Wood Pole
- Existing Overhead Transmission Line
- Existing ENMAX Substation



1:350



March 2024

The data contained is for information purposes only. ENMAX Power Corporation does not make any representations or warranties as to the accuracy or completeness of the information contained herein or its verification. ENMAX does not guarantee that the information will not change at any time. This data is a representation of ENMAX owned and operated facilities only and may not depict the exact locations on the ground. This document is being furnished on a confidential basis and is not to be distributed to any other parties.

Data sources:  
Civil and Circuity: ENMAX 2024;  
Landbase: City of Calgary 2024.

