

# Central Calgary

| Transmission Line Replacement Project



## PROJECT OVERVIEW

For more than 40 years, ENMAX Power's 138 kilovolt (kV) transmission line, 3.82L, which connects ENMAX No. 8 Substation (903 4 Avenue SW) and ENMAX No. 3 Substation (139 17 Avenue NW), has carried electricity to homes and businesses in central Calgary. This line is reaching its end of life and needs to be replaced to continue providing reliable power for Calgarians.

ENMAX Power also owns and operates another 138 kV transmission line, 2.83L, which connects ENMAX No. 13 Substation (867 32 Avenue NE) and ENMAX No. 2 Substation (3120 9 Street SE). To replace 3.82L, we are proposing to build a new transmission line (Central Calgary Transmission Line) that would start at ENMAX No. 3 Substation and connect to the existing 2.83L line near 16 Avenue NE and Deerfoot Trail NE.

This work would also require minor changes to transmission lines just outside ENMAX No. 13 Substation and ENMAX No. 2 Substation, as well as to certain equipment inside those substations. Once the new transmission infrastructure is in place, the existing 3.82L line would no longer operate.

## → Open houses

We're committed to actively engaging community members and obtaining your feedback. Join us at an open house to learn more about potential routes and ask questions:

### Dates and times:

**Tuesday, June 2, 2026**  
3 – 8 p.m.

**Saturday, June 6, 2026**  
9 a.m. – 1 p.m.

Winston Heights-Mountview  
Community Association  
| 520 27 Avenue NE

You can also submit a survey online from June 2 - July 15, 2026 at [enmax.com/cctl](https://enmax.com/cctl) or contact us at:

Phone: 403-514-1471

E-mail: [stakeholderrelations@enmax.com](mailto:stakeholderrelations@enmax.com)

# Central Calgary

| Transmission Line Replacement Project

## This information package includes:

- a report outlining what we heard in our first Project survey and open house events held in December 2025.
- maps illustrating a number of route and configuration options that are currently under consideration.

## → Upcoming application

To prepare for our application to the Alberta Utilities Commission (AUC) we are reviewing the information we use to evaluate potential routes and configurations for the Central Calgary Transmission Line.

Choosing a route is a detailed process that considers many factors. Our application must include route options that are safe, reliable, cost-effective and designed to minimize potential impacts.

We have been engaging with property owners, technical stakeholders and community members to better understand potential impacts.

Through summer 2026, we are evaluating options for the new transmission line, considering additional feedback collected during open houses and the online survey. As a result some options shown may be changed or eliminated.

Before we submit the application in late 2026, we will share which routes and configurations we plan to propose to the AUC as preferred and alternate options.

If you'd like more information about the regulatory process visit [auc.ab.ca](http://auc.ab.ca)

## Route and configuration options

Although the transmission line routes and configurations have not been finalized, we anticipate all options will:

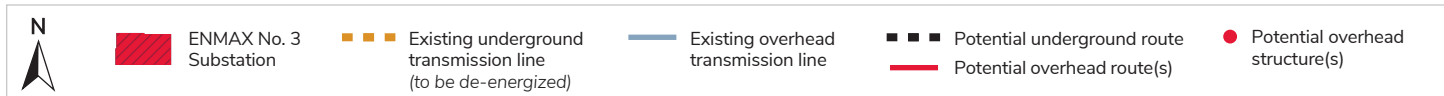
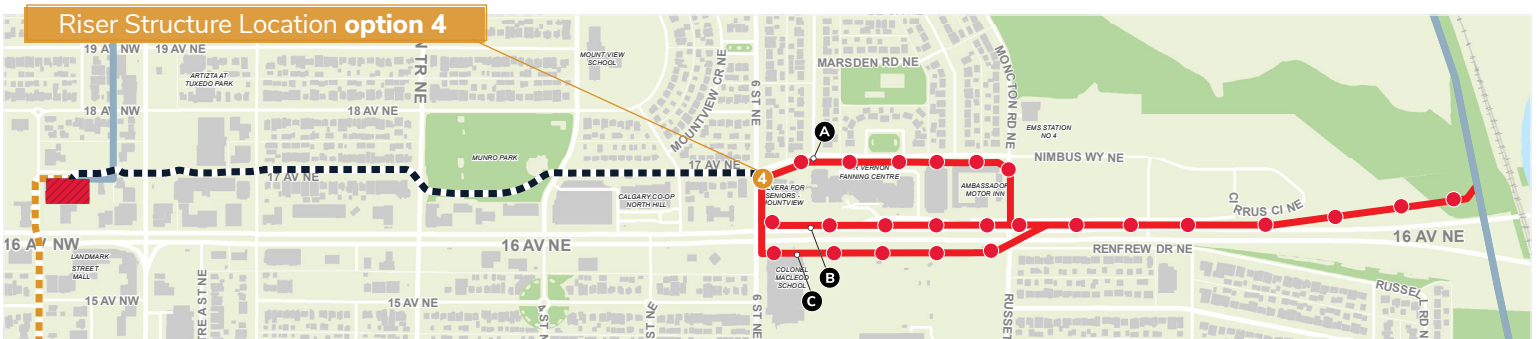
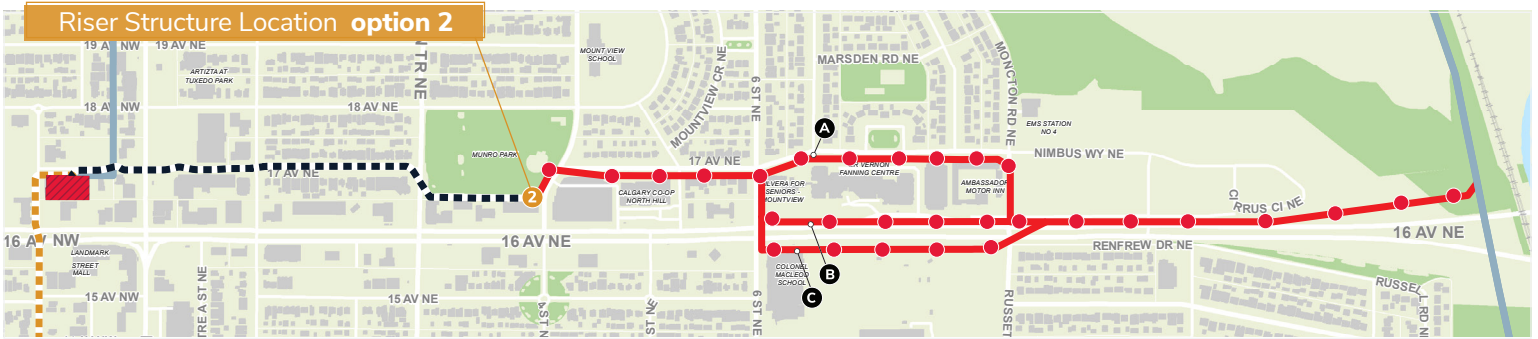
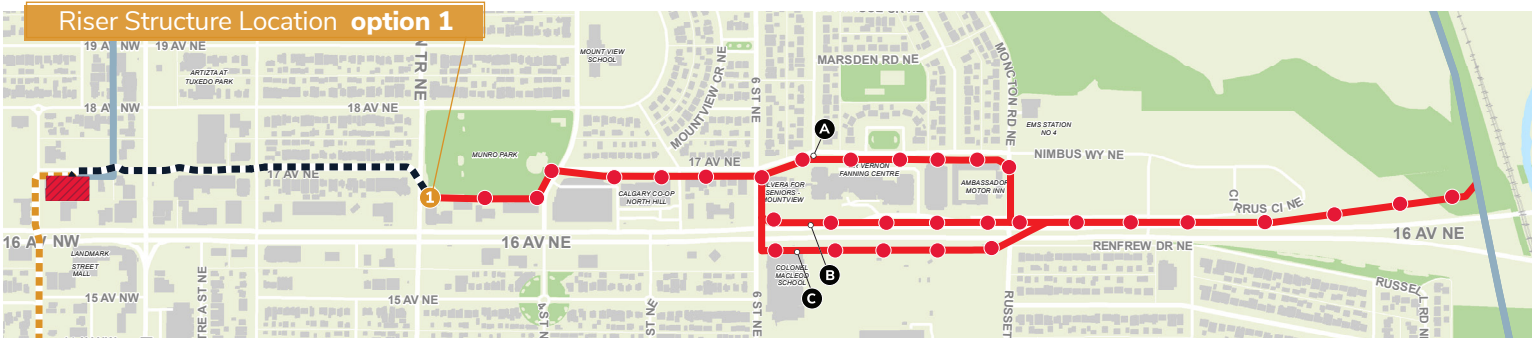
- be located partially underground and partially overhead because the transmission line must leave ENMAX No. 3 Substation underground and connect to an existing overhead line near Deerfoot Trail; and
- transition from underground to overhead at a single overhead steel transition structure (called a riser structure). The length of the underground and overhead sections will depend on the location of the riser structure.

We are seeking feedback on all routes and configurations shown. Your input will help guide decisions, along with other factors such as constructability, environmental and land use effects and cost.



# Central Calgary Transmission Line Replacement Project

| Detailed route maps



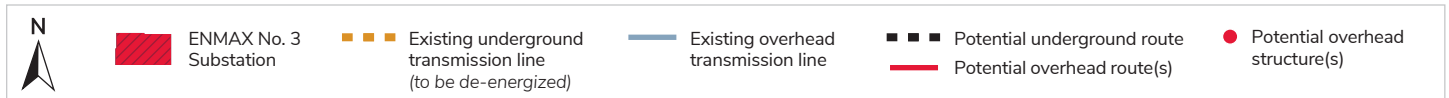
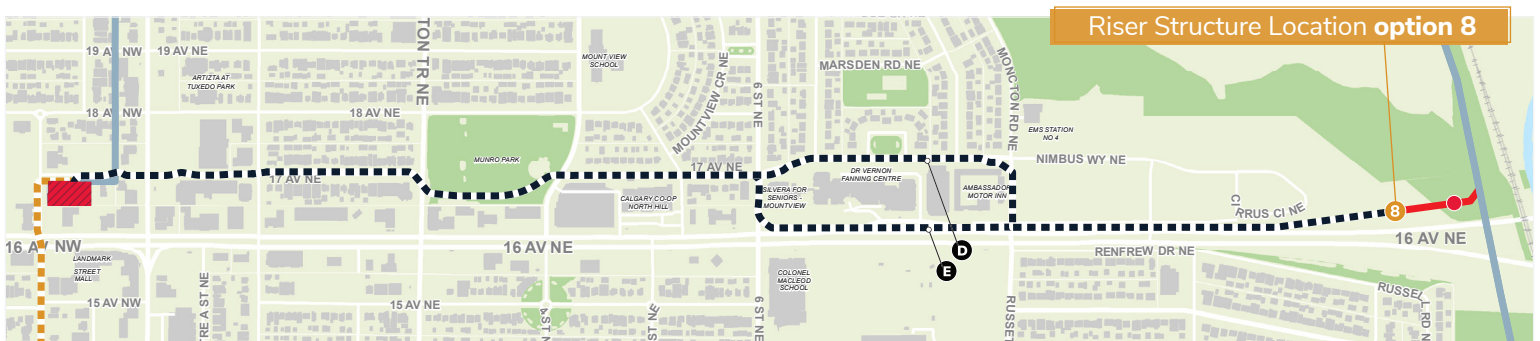
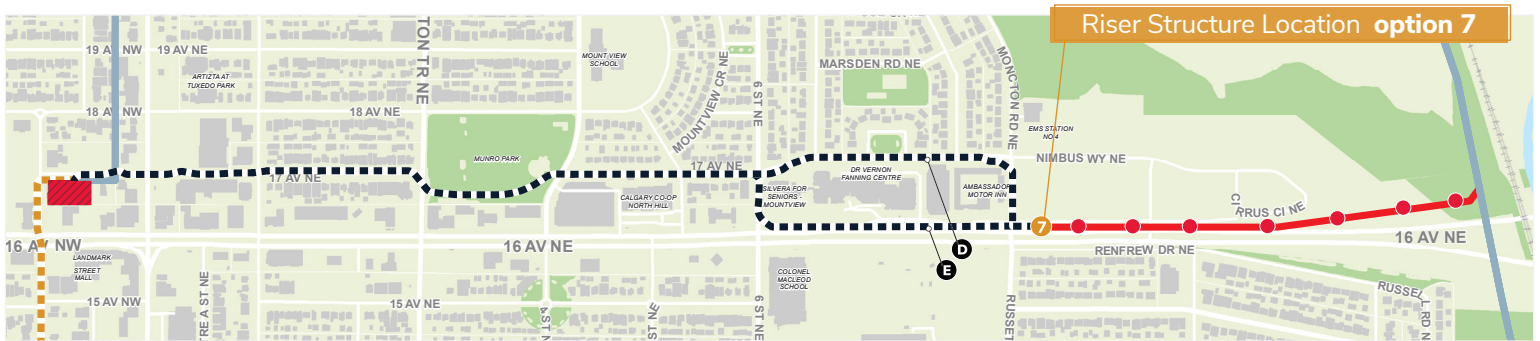
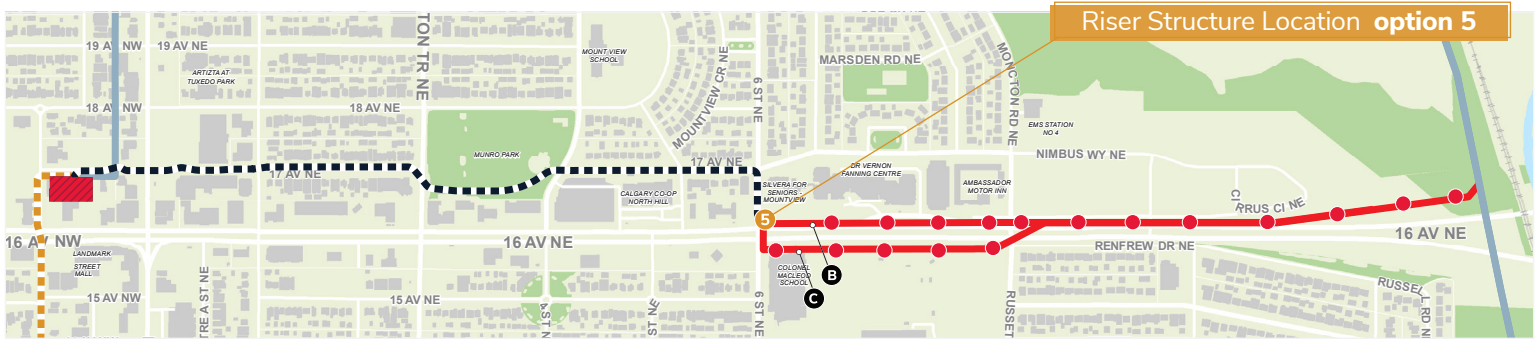
Disclaimer: The data contained is for information purposes only. ENMAX Power Corporation does not make any representations or warranties as to the accuracy or completeness of the information contained herein or its verification. ENMAX does not guarantee that the information will not change at any time. This data is a representation of ENMAX owned and operated facilities only and may not depict the exact locations on the ground.

Data sources: Civil and Circuity; ENMAX 2026; Landbase: City of Calgary 2026. Copyright © The City of Calgary. All rights reserved. Use subject to License.



# Central Calgary Transmission Line Replacement Project

## Detailed route maps



Disclaimer: The data contained is for information purposes only. ENMAX Power Corporation does not make any representations or warranties as to the accuracy or completeness of the information contained herein or its verification. ENMAX does not guarantee that the information will not change at any time. This data is a representation of ENMAX owned and operated facilities only and may not depict the exact locations on the ground.

Data sources: Civil and Circuitry: ENMAX 2026; Landbase: City of Calgary 2026. Copyright © The City of Calgary. All rights reserved. Use subject to License.

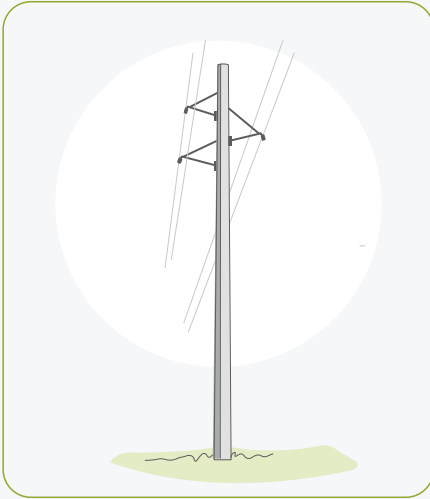
# Central Calgary

| Transmission Line Replacement Project

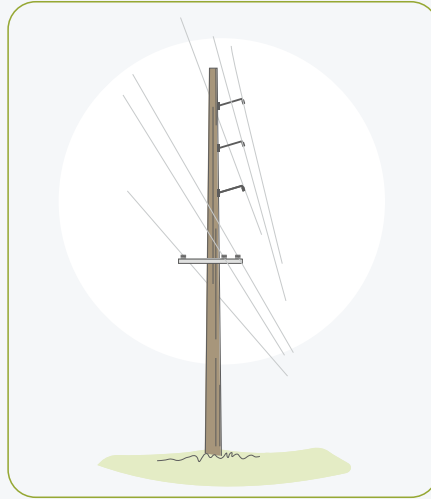
## Proposed transmission infrastructure

### Overhead transmission structures

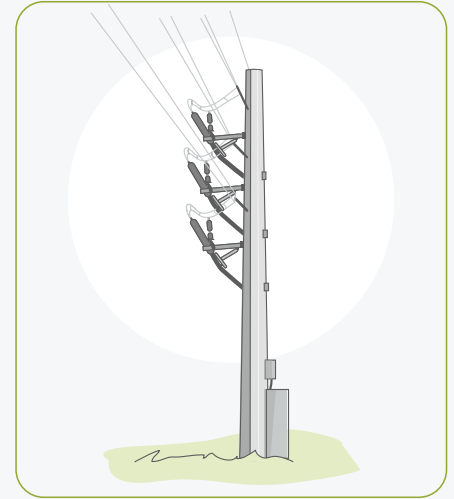
Subject to detailed design, the proposed transmission structures for the overhead portion of the Central Calgary Transmission Line are anticipated to include self-supporting steel monopoles or laminated wood structures, along with one riser structure. These transmission structures are expected to range in height from approximately 22 to 28 meters, as required to meet design and safety standards.



Self-supporting steel monopole; final design may vary.



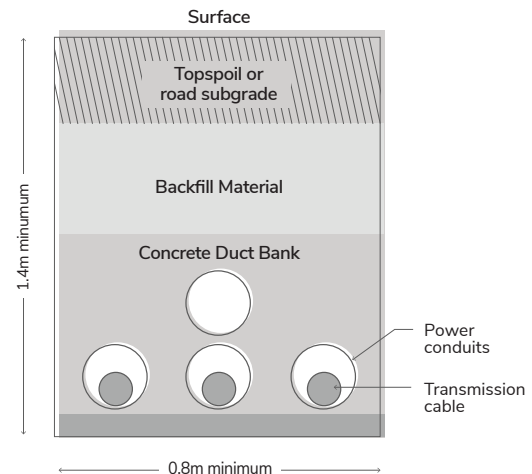
Laminated wood pole; final design may vary.



Riser structure; final design may vary.

### Underground cable infrastructure

Subject to detailed design, the underground portion of the Central Calgary Transmission Line will be built using a **concrete duct bank** which will protect the underground transmission cables from moisture, physical damage and corrosion, while also providing access for cable inspection and maintenance.



## → About ENMAX Corporation

ENMAX provides electricity services, products and solutions. We are headquartered in Calgary, Alberta. Through our companies, ENMAX Power and Versant Power, we own, operate and maintain transmission and distribution lines that safely and reliably deliver electricity to homes and businesses in Calgary and in northern and eastern Maine. Through ENMAX Energy, we generate power and offer electricity and natural gas options to residential, commercial and industrial customers across Alberta. ENMAX is a private company and The City of Calgary is our sole Shareholder.

# Central Calgary Transmission Line engagement report

For more than 40 years, ENMAX Power's transmission line 3.82L has carried electricity to homes and businesses in central Calgary. It needs to be replaced to maintain reliable power for Calgarians.

## What we heard

Through our initial conversations in this round of engagement, we heard a variety of feedback from community members across the study area, particularly in Winston Heights-Mountview. We are documenting these concerns and will include them in our application to the Alberta Utilities Commission (AUC) so the AUC understands the scope and nature of stakeholders' concerns.

## Continued conversation

In December 2025, we restarted the conversation on this essential project. Community feedback plays an important role in routing and siting, the process utilities take to select a route for new or replaced infrastructure.

**2** open houses; **100** attendees

**125** surveys submitted

**230** emails received

**7** one-on-one meetings with key stakeholders

## Routing and siting process and community feedback

### What we heard

Community members want more clarity on how their feedback was being used to influence the new transmission line.

### What we're doing

We've expanded more information about the routing and siting process at open houses and on the project website, including how community feedback is considered. Going forward, we'll be clearer about where feedback influenced decisions and where it could not be acted on.

## 16 Avenue and overhead vs. underground infrastructure

### What we heard

Feedback received during our open houses and project survey indicated a strong preference for underground on 17 Avenue NE or along 16 Avenue.

### What we're doing

We've been looking at all potential routes and configurations in the project study area. This includes overhead and underground options along 16 Avenue NE and 17 Avenue NE. We're continuing to meet with The City of Calgary to hear feedback and gather important technical information.

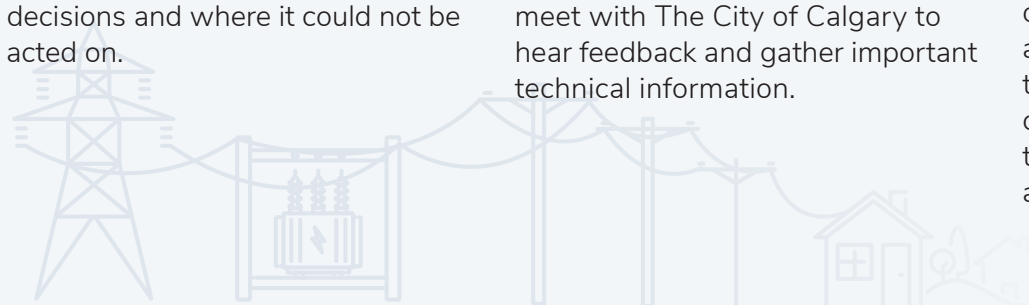
## Cost

### What we heard

Some community members expressed concern that ENMAX may select a route prioritizing cost over other possible impacts that are important to them such as community uses, visual impacts and property value.

### What we're doing

Cost is an important factor to keep in mind for transmission projects because these projects are funded by Albertans. However, cost is only one factor we consider and as noted above, we will continue to seek feedback and consider concerns such as potential impacts to community uses, visual impacts and property values.





## Property value

### What we heard

Community residents and landowners expressed concerns regarding possible impacts to property values resulting from proposed overhead transmission lines in the area.

### What we're doing

When we plan our projects, we look at a range of factors to help us choose locations that create the least overall impact. That includes considering how the land is used, as well as the technical requirements needed to keep things running safely and reliably. We acknowledge the concerns regarding potential impacts to property values and these will be considered in our routing and siting analysis and included in our application to the AUC.



## Trees, landscaping, future land use and visual impacts

### What we heard

Community members shared concerns about how the project could impact future development, land uses and trees and landscaping, particularly related to Munro Park.

### What we're doing

We're carefully evaluating concerns and will include them in our application to the AUC. During the process of selecting a route, stakeholder concerns and environmental factors are thoughtfully considered, along with other factors like constructability and costs, to make sure all important aspects are taken into consideration. For example, we are working with The City of Calgary to ensure we minimize any long-term negative effects on park usage.

If tree removal becomes necessary, we compensate The City of Calgary, contributing to its ongoing replanting programs.



## Noise

### What we heard

Community members are worried about the potential for buzzing or crackling sounds caused by overhead transmission lines.

### What we're doing?

This type of transmission line, 138 kV, is generally expected to make negligible noise. There could be damage to the line or a loose connection that, if identified, we would repair.



## Health and safety

### What we heard

Some community members had concerns about electromagnetic fields, or EMF, created by overhead powerlines.

### What we're doing

We will continue to monitor the latest scientific guidance and ensure the project is designed to meet all applicable standards. EMF modelling will be completed and included in the project's AUC application for each of the proposed route options.

## Next steps

We're currently evaluating a range of route options and configurations as part of the routing and siting process. In June, we will share these options at open houses for feedback, providing an opportunity to review, discuss potential impacts and help inform the selection of both preferred and alternate routes for submission to the AUC in our application later this year.

