



Welcome to our open house

Our team is here to support you, gather feedback and offer details about our Project.

Thank you for taking the time out of your schedule to learn more about our proposed Project. Our team is committed to being a responsible neighbour. That commitment includes providing timely and meaningful engagement with stakeholders about our Projects and applications.



Please reach out to us

Your input is valuable to us. We will ensure you get answers to your question and your concerns are understood.

For more information about the proposed Project, please contact:

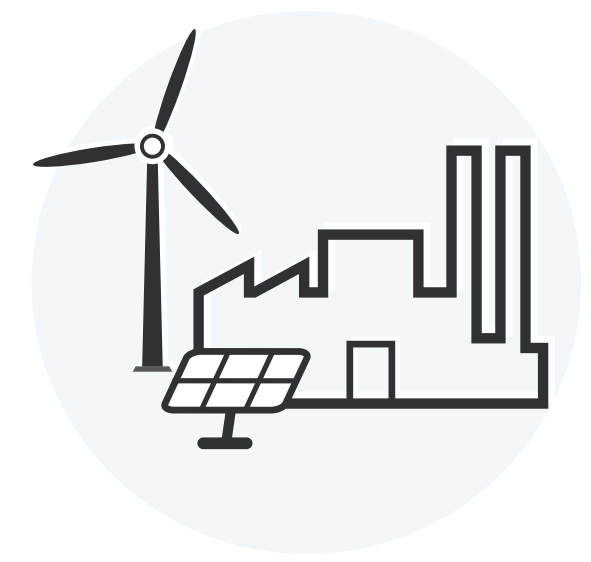
Phone: 403-514-1471

Email: stakeholderrelations@enmax.com

Website: enmax.com/projects



Key components of the **electricity grid**



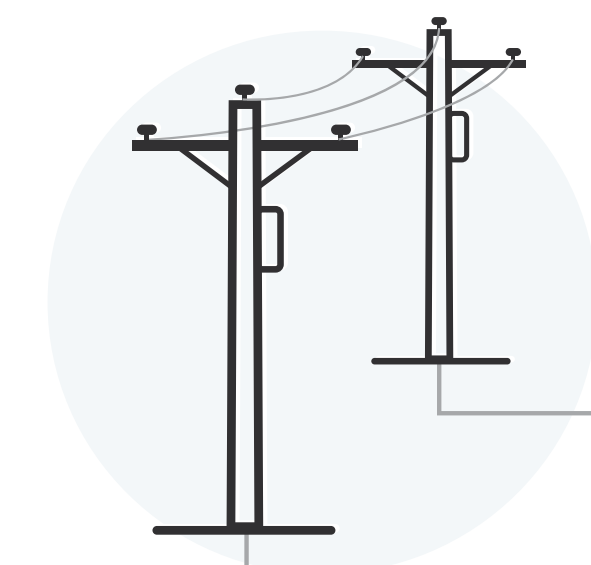
→ **Generation**

In Alberta, electricity is created at natural gas fuelled power plants, or solar and wind farms. Alberta's electricity grid has been coal free since June 2024.



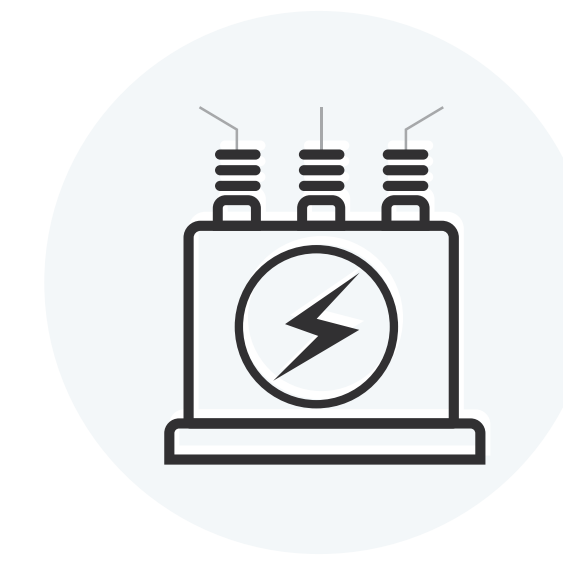
→ **Transmission lines**

The transmission system consists of high-voltage power lines that transport large quantities of power over long distances from generators to substations.



→ **Distribution lines**

The distribution system moves electricity to homes and businesses using overhead or underground lines.



→ **Substations**

From the transmission line, electricity passes through a substation. Inside the substation transformers lower the voltage of the electricity to prepare it for use in homes and businesses.



→ **Transformers**

Before the electricity can be used at a home or business it runs through another transformer either on the pole or the ground that lowers the voltage so it can be used by lights, appliances, electronics and other devices.



Environment

We live in the communities where we work, adding to our commitment to protecting the **land**, **air** and **water** around our operations during construction and maintenance activities. Our Environmental Management System is based on International ISO 14001 standards.



Steps we take to protect the environment:

Each Project is reviewed during the planning phase to identify potential environmental effects.

Environmental management plans are developed to ensure best practices are implemented during construction activities.

Ensuring compliance with environmental legislation, regulations, guidelines, policies and operating approvals. This includes obtaining all required approvals and permits from regulatory bodies including:

- The City of Calgary
- Alberta Environment and Protected Areas
- Fisheries and Oceans Canada
- Environment and Climate Change Canada



If you have an environmental question

Please speak to a member of our team here at the open house, or visit enmax.com/projects to learn more about the proposed Project.



Electromagnetic fields

FAST FACTS

What are Electromagnetic fields (EMFs)?

EMFs (electric and magnetic fields) are found everywhere electricity is used, from household wiring and appliances to power lines.

What qualifies as extremely low frequencies (ELF)?

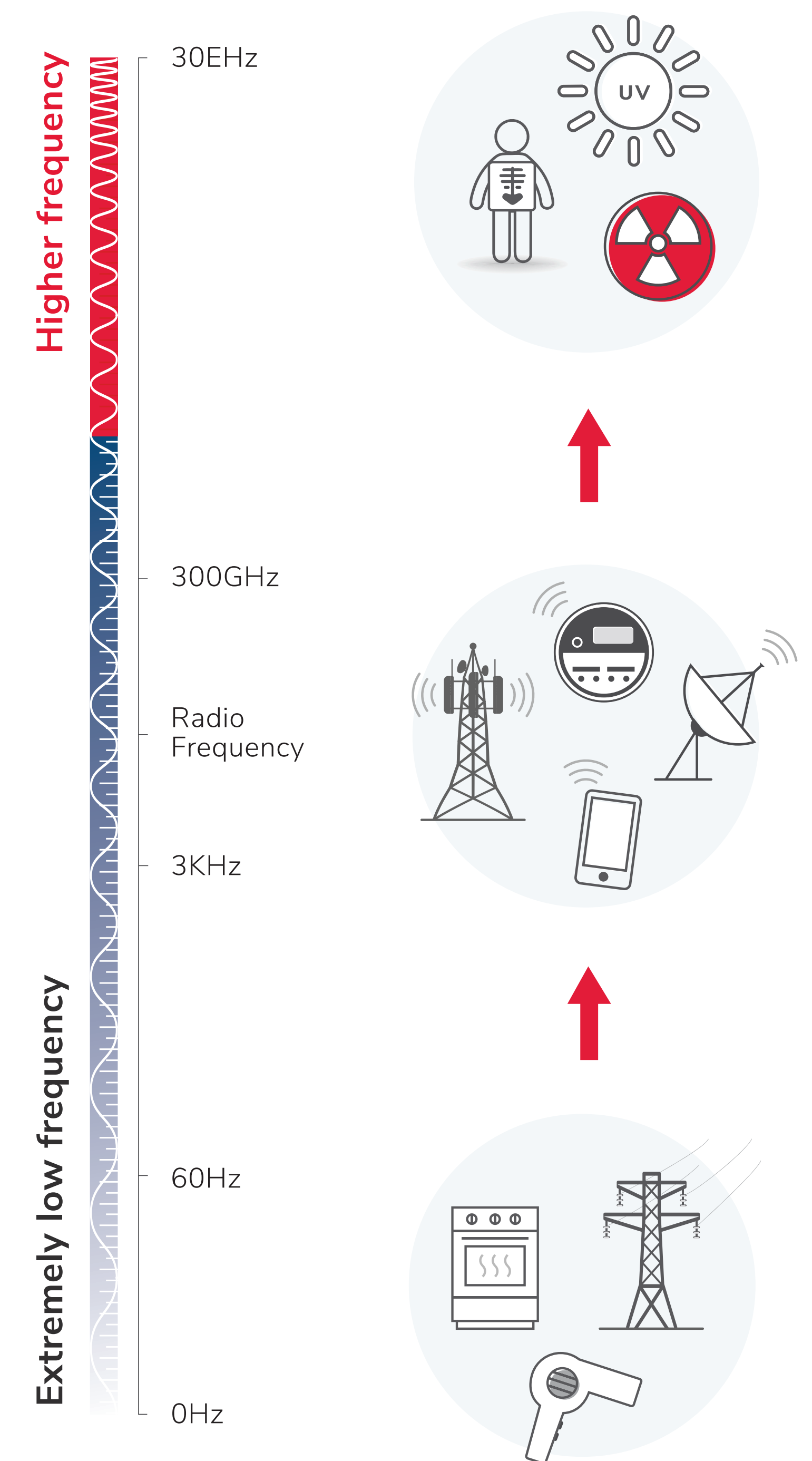
Health Canada defines ELF as between 1 hertz (Hz) and 3 kilohertz (kHz).

Are power lines considered extremely low frequencies?

ELF refers to frequencies below 300 hertz (Hz), including EMF from power lines. The World Health Organization has not found any conclusive evidence that long-term exposure to low level long-term EMFs from power lines are harmful.

ENMAX is committed to staying informed about any changes to research or guidelines related to EMFs, and to maintaining an ongoing dialogue with our customers and the public.

The Electromagnetic Spectrum



If you have a question about Electromagnetic fields

Please speak to a member of our team here at the open house, or visit enmax.com/projects to learn more about the proposed Project.

