

32 AVENUE NORTHEAST 13.82L

Transmission Line Alteration



PROJECT OVERVIEW

ENMAX Power Corporation (ENMAX Power) owns and operates transmission line 13.82 (13.82L), which provides electrical services to residential and commercial properties in Calgary's McCall and South Airways communities and surrounding areas. 13.82L is a 138-kilovolt transmission line that runs northeast from ENMAX No. 13 Substation (867 32 Avenue NE) to ENMAX No. 22 Substation (2040 23 Street SE).

ENMAX Power intends to apply to the Alberta Utilities Commission (AUC) for approval to alter 13.82L by removing two existing wood poles and replacing them with two wood poles within the existing alignment near the intersection of 32 Avenue and 12 Street NE (the Project).

The proposed pole replacements will increase the height of the 13.82L conductors, which will allow ENMAX Power to comply with clearance requirements between 13.82L and a traffic light in the area. The Project will ensure the safe, reliable, and efficient operation of ENMAX Power's electrical system.

PROPOSED SCHEDULE

ENMAX Power plans to file a Checklist Application with the AUC in Q4 2023. Subject to receiving approvals and the procurement of materials, construction is anticipated to begin in Q2 2024. Construction is anticipated to take approximately two weeks with a proposed in-service date in Q2 2024. We encourage stakeholders to consult the webpage for the most up-to-date construction information.

**For more than 100 years,
ENMAX Power has delivered safe
and reliable electricity in Calgary.**

32 AVENUE NORTHEAST 13.82L

Transmission Line Alteration



**ENMAX POWER
13.82L
Transmission
Line Clearance
Mitigation Project**

**Newsletter
Map**

Legend

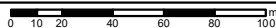
Transmission Poles

- Existing Wood Pole to be replaced
- ★ Existing Steel Monopole
- Existing Wood Pole

- Existing Overhead Transmission Line
- Buildings
- Hydrology
- Natural Area



1:2,500



November 2023



The data contained is for information purposes only. ENMAX Power Corporation does not make any representations or warranties as to the accuracy or completeness of the information contained herein or its verification. ENMAX does not guarantee that the information will not change at any time. This data is a representation of ENMAX owned and operated facilities only and may not depict the exact locations on the ground. This document is being furnished on a confidential basis and is not to be distributed to any other parties.

Data sources:
Civil and Circultry; ENMAX 2023;
Landbase; City of Calgary 2023.

T:\Drive_ENMAX_GIS\Enmax_GIS_Projects\Stakeholders\Transmission_13_82L_2023\1018\Work\Transmission_13_82L_Stakeholder_Newsletter_6x11_20231116.mxd

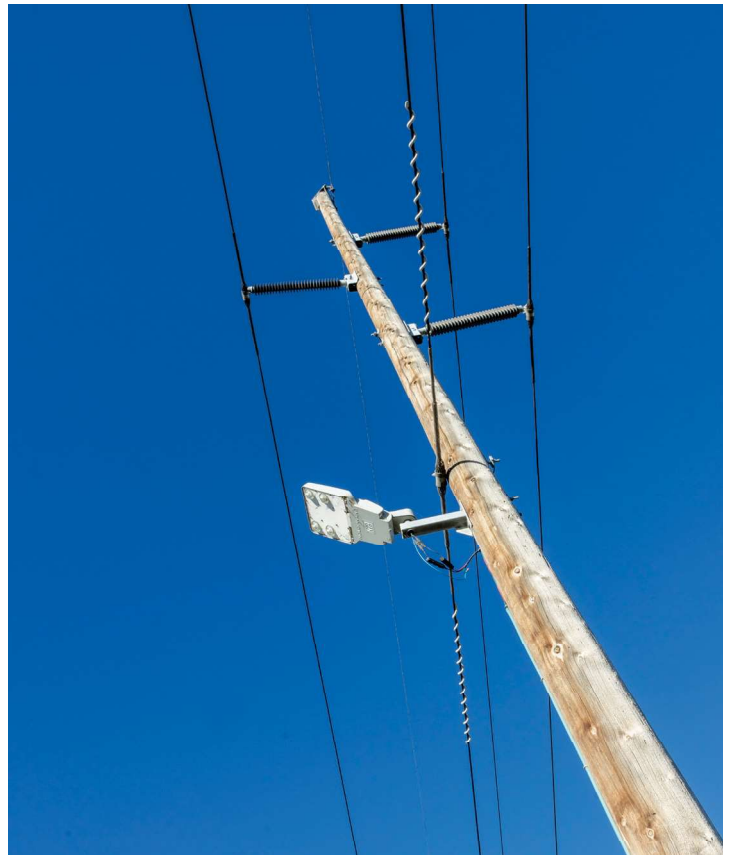


32 AVENUE NORTHEAST 13.82L

Transmission Line Alteration



Example of Existing Wood Pole



Proposed New Wood Pole

TRANSMISSION STRUCTURES

The existing wood poles are approximately 19 meters in height and the new wood poles will be between 21 to 23 meters in height.

CONSTRUCTION METHODS

The proposed construction activities will take place on the north side of 32 Avenue NE and the east and west sides of the intersection at 12 Street NE. Temporary access accommodations may be periodically required during construction. ENMAX Power will work with stakeholders and The City of Calgary to minimize the impact on residences, businesses, and commuters in the area.

POWER OUTAGES

There are no planned power outages impacting customers as part of the proposed work.

Transmission line: High voltage power line that transports large quantities of power over long distances.

Wood pole: A self-supporting structure made of wood, designed to support, and carry overhead transmission lines.

Conductor: A wire typically made up of multiple aluminum strands around a steel or copper core that together carry electricity. A conductor is strung between transmission structures.

32 AVENUE NORTHEAST 13.82L

Transmission Line Alteration



COMMITMENT TO COMMUNITY

ENMAX Power is committed to being a responsible corporate neighbour. Our commitment includes providing timely and meaningful engagement with stakeholders about our projects and applications. We provide opportunities for stakeholders, including residents, occupants and landowners, to be informed about our projects and applications, and to engage with us at all stages.

ABOUT ENMAX CORPORATION

The ENMAX group of companies is a leading provider of electricity services, products and solutions. ENMAX Corporation (ENMAX) is headquartered in Calgary, Alberta, with operations across Alberta and Maine. Through its subsidiaries, ENMAX Power Corporation and Versant Power, ENMAX owns and operates transmission and distribution utilities that safely and reliably deliver electricity to customers in Calgary and northern and eastern Maine. Through ENMAX Energy Corporation, ENMAX owns and operates power generation facilities and offers a range of innovative electricity and natural gas products and services to residential, commercial and industrial customers across Alberta. ENMAX is a private corporation and The City of Calgary is its sole shareholder.

CONTACT INFORMATION

Your input is valuable to us. We will ensure you get answers to your questions and that your concerns are understood. For more information about the proposed Project, please contact:

ENMAX POWER CORPORATION

Phone: 403-514-1471

E-mail: stakeholderrelations@enmax.com

Website: enmax.com/32AvenueNE

To learn more about the regulatory process, please contact:

ALBERTA UTILITIES COMMISSION

Phone: 403-310-4282

Email: info@auc.ab.ca

Website: auc.ab.ca