

Starfield

Transmission Line Alteration



PROJECT OVERVIEW

ENMAX Power Corporation (ENMAX Power) owns and operates single-circuit 138 kilovolt (kV) transmission lines 37.81L and 24.83L along 68 Street SE, in addition to single-circuit 23.80L and double-circuit lines 23.80/37.82L Along 50 Avenue SE.

In preparation for the planned construction of the Starfield subdivision, The City of Calgary has requested ENMAX Power to alter sections of these transmission lines to accommodate the planned expansion of 50 Avenue and 68 Street SE.

ENMAX Power intends to apply to the Alberta Utilities Commission (AUC) for approval to relocate and replace transmission structures associated with transmission lines 37.81L, 24.83L, 23.80L, and 23.80/37.82L (The Project).

The Project will allow The City to complete the planned expansion of 50 Avenue and 68 Street SE while ensuring the continued safe, reliable and efficient operation of ENMAX Power's electrical system.

Details of the alterations are depicted in the attached map and described below.

PROPOSED SCHEDULE

ENMAX Power plans to file a facility application for the Project with the AUC in Q1 2026. Subject to receiving approvals and the procurement of materials, construction is anticipated to begin in Q3 2026, with a proposed in-service date in Q2 2027 to align with The City of Calgary project schedules.

Stakeholders are encouraged to consult the webpage for the most up-to-date construction information.

For more than 100 years, ENMAX Power has delivered safe and reliable electricity in Calgary.

68 Street Alterations (37.81L and 24.83L)

ENMAX Power is proposing to alter a 300 metre section of 37.81L by replacing five existing wood poles with three self-supporting steel monopoles in its current alignment. Additionally, ENMAX Power is proposing to alter a 1.5 kilometre section of 24.83L by replacing 16 wood poles with 12 wood poles and two steel monopoles.

50 Avenue SE Alterations (23.80L and 23.80/37.82L)

ENMAX Power is proposing to alter a one kilometre section of 23.80L by relocating nine laminated wood poles approximately eight metres north of their current alignment. As part of this proposed alteration, two steel monopoles will be replaced for transmission lines 23.80 and 37.82L.



PROJECT IMPACTS AND MITIGATION MEASURES

Road Closures

ENMAX Power anticipates the need to close certain roads and lanes periodically during the construction of the Project. Such closures will be detailed in a traffic management plan to be approved by The City of Calgary. Construction will be completed in segments and in a manner that limits impacts to sidewalks, bike lanes, and traffic. Certain activities will be performed during periods of low traffic volumes, where possible.

Power Outages

There are no planned power outages impacting customers as part of the proposed work.

TRANSMISSION STRUCTURES

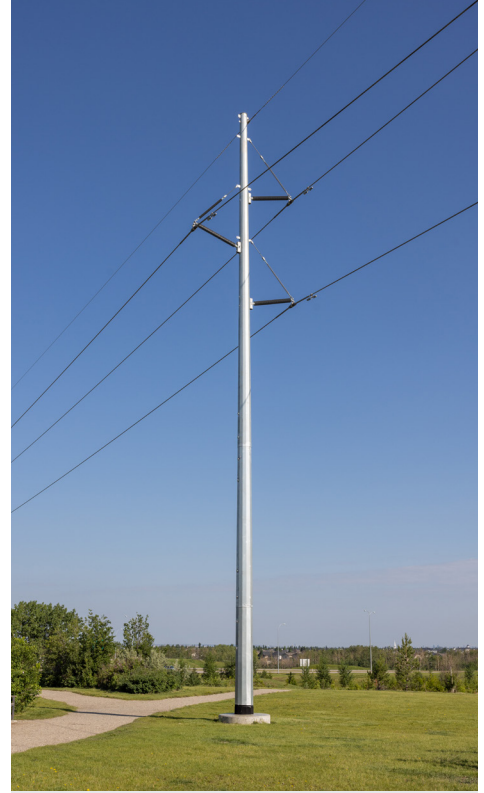
Subject to the detailed design, the proposed and relocated transmission structures will be a combination of wood poles, laminated wood poles, and steel monopoles, as detailed in the attached map. The transmission structures are expected to be between approximately 22 to 26 metres in height, as required to meet design and safety standards.



Example of Wood Pole



Example of Laminated Wood Pole



Example of Self-Supporting Steel Monopole

Laminated Wood Pole: A laminated wood pole structure designed to support and carry overhead transmission lines.

Self-supporting steel monopole: A self-supporting steel pole structure designed to support and carry overhead transmission lines.

Transmission Lines: High voltage power lines that transport large quantities of power over long distances.

Wood Pole: A wood structure designed to support and carry overhead transmission lines. Wood poles may require guy wires where technically required.



COMMITMENT TO COMMUNITY

ENMAX Power is committed to being a responsible corporate neighbour. Our commitment includes providing timely and meaningful engagement with stakeholders about our projects and applications. We provide opportunities for stakeholders, including residents, occupants and landowners, to be informed about our projects and applications, and to engage with us at all stages.

ABOUT ENMAX CORPORATION

The ENMAX group of companies is a leading provider of electricity services, products and solutions. ENMAX Corporation (ENMAX) is headquartered in Calgary, Alberta, with operations across Alberta and Maine. Through its subsidiaries, ENMAX Power Corporation and Versant Power, ENMAX owns and operates transmission and distribution utilities that safely and reliably deliver electricity to customers in Calgary and northern and eastern Maine. Through ENMAX Energy Corporation, ENMAX owns and operates power generation facilities and offers a range of innovative electricity and natural gas products and services to residential, commercial and industrial customers across Alberta. ENMAX is a private corporation and The City of Calgary is its sole shareholder.

CONTACT INFORMATION

Your input is valuable to us. We will ensure you get answers to your questions and your concerns are understood. For more information about the proposed Project, please contact:

ENMAX POWER CORPORATION

Phone: 403-514-1471

E-mail: stakeholderrelations@enmax.com

Website: enmax.com/starfieldproject

To learn more about the regulatory process, please contact:

ALBERTA UTILITIES COMMISSION

Phone: 403-310-4282

Email: info@auc.ab.ca

Website: auc.ab.ca

