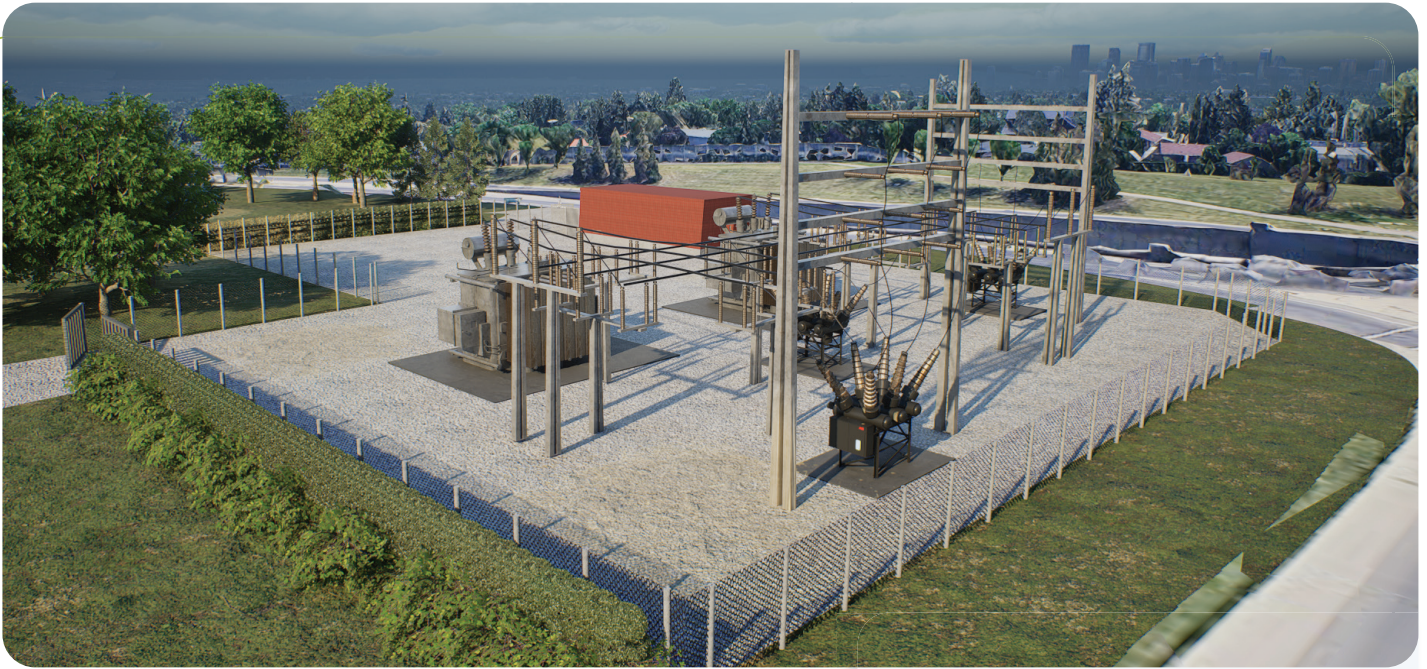


# No. 27 Substation

| Rebuild Project



## PROJECT OVERVIEW

ENMAX Power owns and operates ENMAX No. 27 Substation, located at 4236 14 St NW, Calgary AB, providing electrical service to surrounding communities in the northwest area of Calgary.

Due to the age and condition of the existing substation equipment, ENMAX Power is proposing to rebuild the outdoor 69 kilovolt (kV) electrical equipment at ENMAX No. 27 Substation. This work includes replacing major outdoor electrical components within the existing substation property. Additionally, to accommodate modern equipment and current safety standards, the substation fence-line will be expanded and two existing transmission lines will be altered to connect to the rebuilt substation (the Project).

## Proposed schedule

ENMAX Power plans to file a facility application for the Project with the Alberta Utilities Commission (AUC) in **mid 2026**. Subject to regulatory approvals and the procurement of materials, construction is anticipated to begin in **early 2028**. Construction is anticipated to take approximately two years, with the Project expected to be in service by **late 2029**.

Stakeholders are encouraged to visit the Project webpage for the most up-to-date information on construction timing and activities. If you'd like more information about the regulatory process visit [auc.ab.ca](http://auc.ab.ca)

## → Open houses

We're committed to actively engaging community members and obtaining your feedback. Join us at an open house to learn more about the Project and ask questions:

### Dates and times:

**Monday, June 15, 2026**

**3 – 8 p.m.**

**Tuesday, June 16, 2026**

**3 – 8 p.m.**

North Haven Community Association  
| 5003 N Haven Dr, Calgary, AB

## → Contact information

**ENMAX Power**

**Phone:** 403-514-1471

**E-mail:** [stakeholderrelations@enmax.com](mailto:stakeholderrelations@enmax.com)

**Website:** [enmax.com/no27substation](http://enmax.com/no27substation)

# No. 27 Substation

Rebuild Project



## → Construction methods

- Construction activities will occur primarily within the existing and expanded fence boundary on the existing No. 27 Substation property.
- Work will be staged to maintain system reliability while new equipment is installed and existing equipment is removed. Temporary construction measures and access adjustments may be required during construction.



**Customers should not experience any planned outages while this work is being carried out.**

## What is being proposed?

### Substation changes:

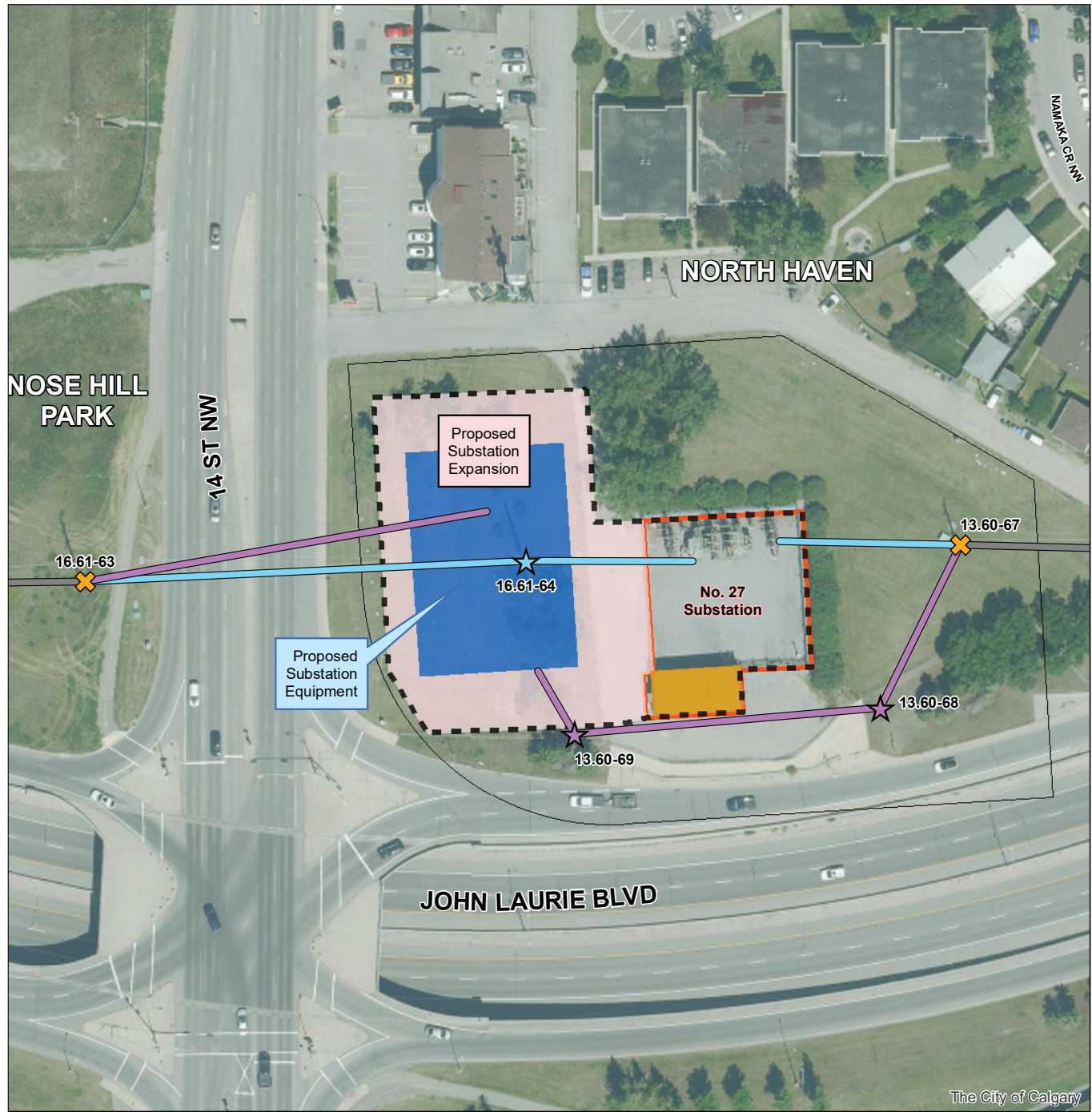
- Replacement of all existing outdoor electrical equipment, including two substation power transformers, two high voltage circuit breakers, nine disconnect switches, and associated components.
- Construction of new foundations and structures to support the modern equipment.
- Expansion of the substation fenced boundary.
- Landscaping along the northern expanded substation fence-line.

### Transmission line alteration:

- Transmission line 16.61L (16.61L) will require the replacement of one wood pole with one steel monopole (16.61-63) and the removal of a steel monopole (16.61-34), along a modified alignment to reconnect the transmission line inside the new fenced area.
- Transmission line 13.60L (13.60L) will require the replacement of one wood pole with one steel monopole. To reconnect this transmission line inside the expanded fenced area, a new alignment that includes two new proposed steel monopoles (13.60-68 and 13.60-69) will be required within the southern property boundary.

# No. 27 Substation

Project map



The City of Calgary

<p><b>ENMAX Power</b></p> <p><b>No. 27 Substation Rebuild Project</b></p> <p><b>Newsletter Map</b></p>	<p><b>Legend</b></p> <p><b>Transmission Structures</b></p> <ul style="list-style-type: none"> <li>★ Proposed Steel Monopole</li> <li>✕ Existing Wood Pole to be Replaced with Steel Monopole</li> <li>★ Existing Steel Monopole to be Removed</li> </ul> <p><b>Transmission Routes</b></p> <ul style="list-style-type: none"> <li>— Existing Overhead Transmission Line</li> <li>— Existing Overhead Transmission Line to be Relocated</li> <li>— Proposed Transmission Line Alignment</li> <li>— Existing Substation Fence-Line</li> </ul> <ul style="list-style-type: none"> <li>▣ Proposed Fence-Line Expansion</li> <li>▣ Proposed Substation Equipment</li> <li>▣ Existing Substation Building</li> <li>▣ Proposed Substation Expansion</li> <li>▣ ENMAX Property Boundary</li> </ul>	<p><b>CALGARY</b></p> <p>N</p>
--	--	--------------------------------

# No. 27 Substation

| Rebuild Project

## Transmission structures

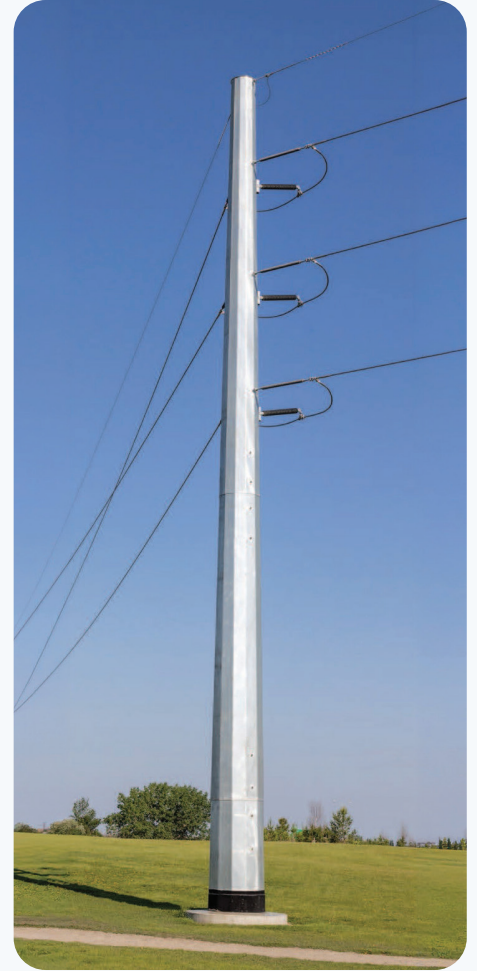
Subject to the detailed design, the existing transmission structures (ranging in height from 14 to 22 meters) will be replaced with self-supporting steel monopoles. These transmission structures are expected to be between approximately 20 to 24 meters in height, as required to meet design and safety standards.



Transformer



Circuit breaker



Self-supporting steel monopole



## About ENMAX Corporation

ENMAX provides electricity services, products and solutions. We are headquartered in Calgary, Alberta. Through our companies, ENMAX Power and Versant Power, we own, operate and maintain transmission and distribution lines that safely and reliably deliver electricity to homes and businesses in Calgary and in northern and eastern Maine. Through ENMAX Energy, we generate power and offer electricity and natural gas options to residential, commercial and industrial customers across Alberta. ENMAX is a private company and The City of Calgary is our sole Shareholder.