

# No. 20 Substation

## Switchgear Replacement Time Extension Application



### PROJECT OVERVIEW

ENMAX Power Corporation (ENMAX Power) owns and operates ENMAX No. 20 Substation, located at 2508 Bowness Road NW. ENMAX No. 20 Substation commenced operations over 45 years ago and provides electrical services to residential and commercial properties in Calgary's West Hillhurst area and surrounding communities. In 2023, ENMAX Power received approval from the Alberta Utilities Commission (AUC) to replace the switchgear and install two plenum vents on the southern exterior wall of ENMAX No. 20 Substation leading to the roof (the Project).

The original approvals required construction to be completed by Q1 2026. Engineering and procurement timelines have delayed completion of the Project and therefore, ENMAX Power intends to file an application with the AUC to request a time extension to complete the Project.

### PROPOSED SCHEDULE

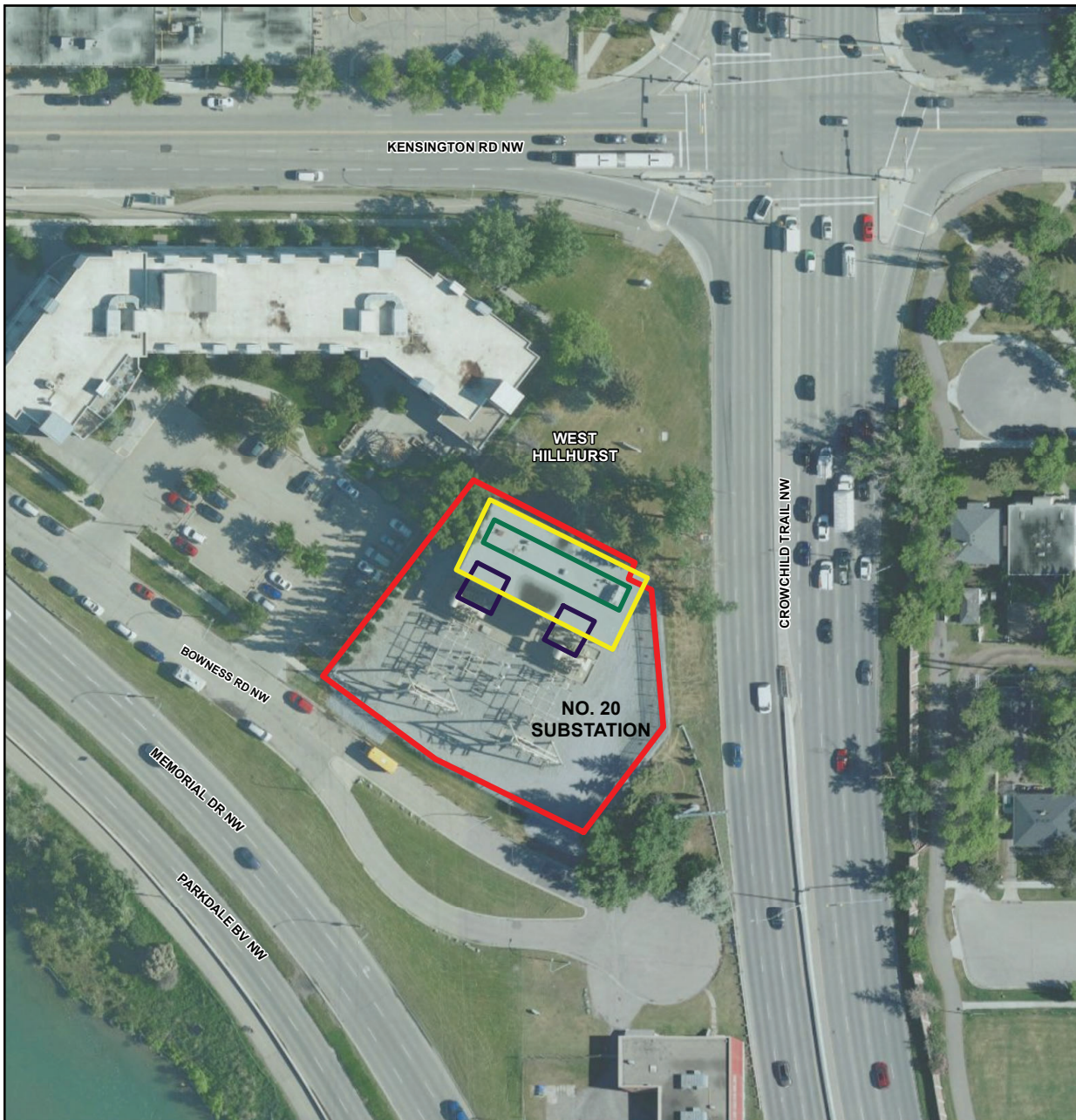
ENMAX Power plans to file a checklist application for the Project with the AUC in Q2 2025. Subject to receiving approvals, construction is anticipated to begin in Q3 2025 with a proposed in-service date in Q4 2027. Stakeholders are encouraged to consult the webpage for the most up-to-date construction information.

For more than 100 years, ENMAX Power has delivered safe and reliable electricity in Calgary.



# No. 20 Substation

Switchgear Replacement Time Extension Application



**ENMAX Power**  
**No.20**  
**Substation**  
**Switchgear**  
**Replacement -**  
**Time**  
**Extension**  
**Application**

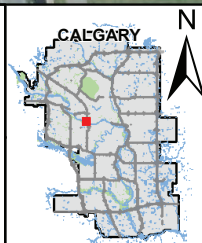
**Newsletter Map**

## Legend

- Existing Enmax Substation
- Existing Substation Building
- Approved Switchgear Plenum Vent Locations
- Approved Switchgear Replacement

1:1,000

0 5 10 20 30 40 50 m



May 2025



The data contained is for information purposes only. ENMAX Power Corporation does not make any representations or warranties as to the accuracy or completeness of the information contained herein or its verification. ENMAX does not guarantee that the information will not change at any time. This data is a representation of ENMAX owned and operated facilities only and may not depict the exact locations on the ground. This document is being furnished on a confidential basis and is not to be distributed to any other parties.

Data sources:  
Civil and Circuity: ENMAX 2025;  
Landbase, Orthophoto: City of Calgary 2025.

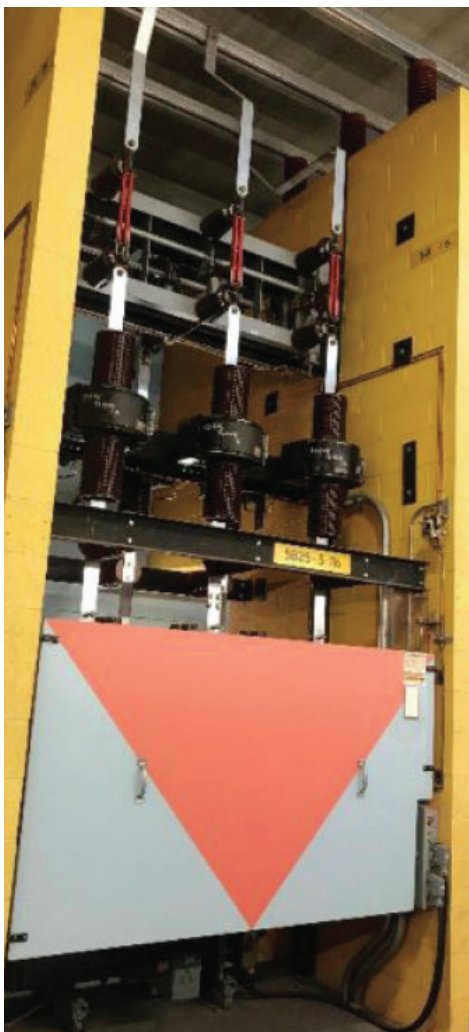
T:\Gdrive\_ENMAX\_GIS\ENMAX\_GIS\_Projects\Stakeholders\Sub20\_20230518\Sub20\_Stakeholder\_Overview\_8x11\_20250305.mxd

## No. 20 Substation

Switchgear Replacement Time Extension Application



Example of Plenum Vent



Example of Current Switchgear



Example of approved Switchgear

**Substation:** A substation is an important component of electrical infrastructure that changes the voltage of electricity to make it suitable for use.

**Switchgear:** Substation equipment that is comprised of electrical disconnect switches, fuses or circuit breakers used to control, protect and isolate electrical equipment.

**Switchgear Plenum Vent:** A metal vent which allows for pressure waves and heat to travel to a safe location away from switchgear and personnel in the case of a fault or short circuit event.

### CONSTRUCTION METHODS AND IMPACTS

Construction activities associated with the Project will be undertaken within the existing ENMAX No. 20 Substation location at 2508 Bowness Road NW. Temporary access accommodations may be periodically required during construction. ENMAX Power will work with stakeholders and The City of Calgary to minimize the impact to residences, businesses and commuters in the area.

### POWER OUTAGES

There are no planned power outages impacting customers as part of the proposed work.



## No. 20 Substation

Switchgear Replacement Time Extension Application



### COMMITMENT TO COMMUNITY

We are committed to being a responsible corporate neighbour. Our commitment includes providing timely and meaningful engagement with stakeholders about our projects and applications. We provide opportunities for stakeholders, including residents, occupants and landowners, to be informed about our projects and applications, and to engage with us at all stages.

### ABOUT ENMAX CORPORATION

The ENMAX group of companies is a provider of electricity services, products and solutions. We are headquartered in Calgary, Alberta, with operations across Alberta and Maine. Through our subsidiaries, ENMAX Power Corporation and Versant Power, we own and operate transmission and distribution utilities that safely and reliably deliver electricity to customers in Calgary and northern and eastern Maine. Through ENMAX Energy Corporation, ENMAX owns and operates power generation facilities and offers a range of electricity and natural gas products and services to residential, commercial and industrial customers across Alberta. ENMAX is a private corporation and The City of Calgary is its sole shareholder.

### CONTACT INFORMATION

Your input is valuable to us. We will ensure you get answers to your questions and your concerns are understood. For more information about the proposed Project, please contact:

#### ENMAX POWER CORPORATION

**Phone:** 403-514-1471

**E-mail:** [stakeholderrelations@enmax.com](mailto:stakeholderrelations@enmax.com)

**Website:** [enmax.com/no20substation](http://enmax.com/no20substation)

To learn more about the regulatory process, please contact:

#### ALBERTA UTILITIES COMMISSION

**Phone:** 403-310-4282

**Email:** [info@auc.ab.ca](mailto:info@auc.ab.ca)

**Website:** [auc.ab.ca](http://auc.ab.ca)