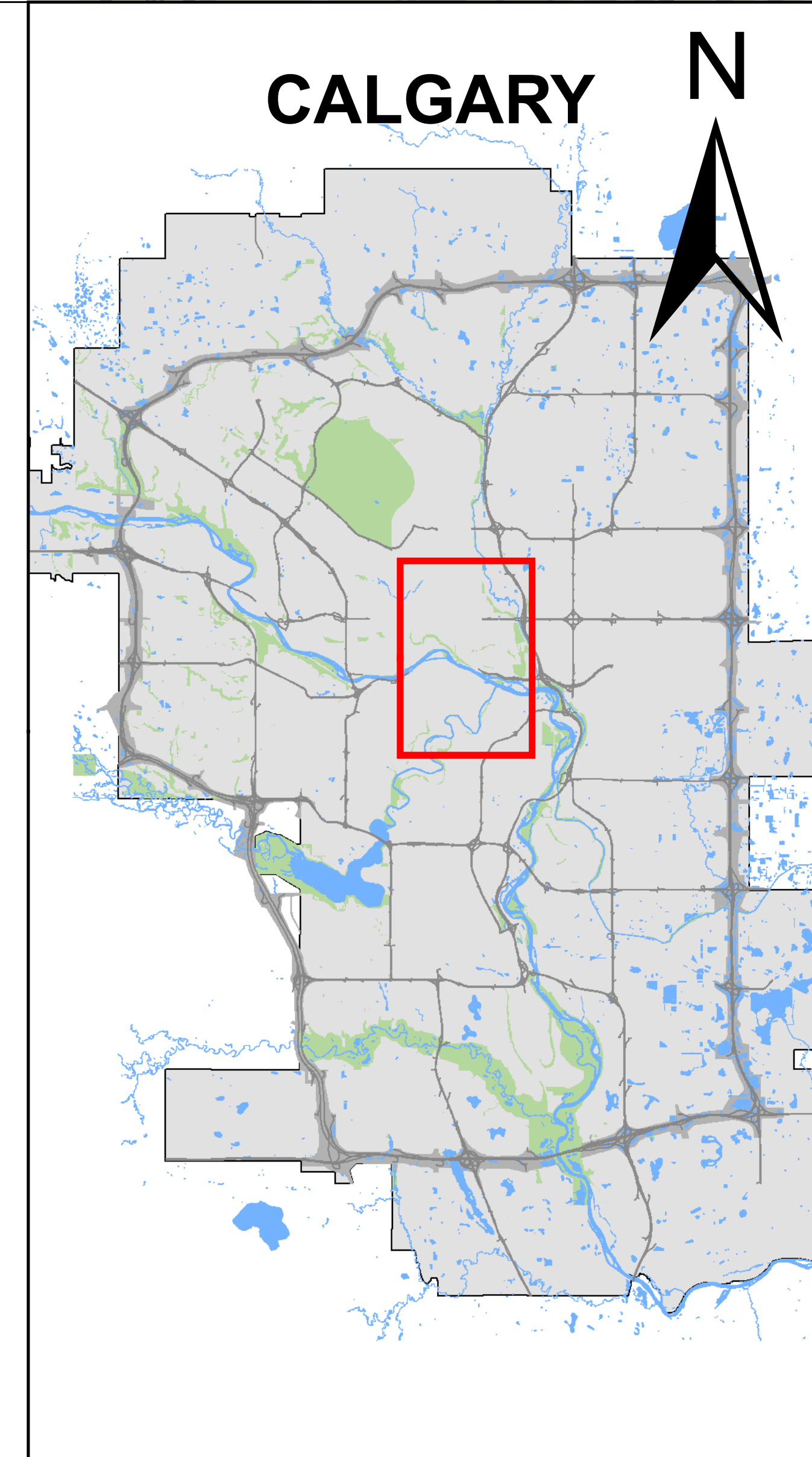


**CENTRAL CALGARY Transmission Line Replacement Overview Map**

**Legend**

3.82L Existing Underground Transmission Line to be discontinued from operations	Existing Overhead Transmission Line
2.83L Proposed Underground Route Options	Existing ENMAX Substation
2.83L Proposed Overhead Route Options	LRT
Existing Underground Transmission Line	Railway
2.85L Proposed Underground Route (No. 2 Substation)	Buildings
	Hydrology
	Natural Area



1:5,250

The data contained is for information purposes only. ENMAX Power Corporation does not make any representations or warranties as to the accuracy or completeness of the information contained herein or its verification. ENMAX does not guarantee that the information will not change at any time. This data is a representation of ENMAX owned and operated facilities only and may not depict the exact locations on the ground. This document is being furnished on a confidential basis and is not to be distributed to any other parties.

March 2024

Data sources:  
Civil and Circuitry: ENMAX 2024;  
Landbase: City of Calgary 2024.