

# ENMAX NO. 162 SUBSTATION

## Circuit Breaker Replacement



### PROJECT OVERVIEW

ENMAX Power Corporation (ENMAX Power) owns and operates ENMAX No. 162 Substation, located at 13939 68 ST NE. ENMAX No. 162 Substation provides electrical services to commercial and residential properties in Calgary's Cornerstone and Redstone areas and surrounding communities.

ENMAX Power identified two 138 kilovolt (kV) circuit breakers at ENMAX No. 162 Substation that are at risk of exceeding their rated transient recovery voltage (TRV) capability, which can potentially cause equipment failure. As a result, ENMAX Power is proposing to replace two 138 kV circuit breakers with two new 245 kV class circuit breakers (the Project).

ENMAX Power intends to apply to the Alberta Utilities Commission (AUC) for approval to replace the circuit breakers, which are located on the south exterior of the substation building within the existing substation fence line. The Project will ensure continued safe, reliable, and efficient operation of ENMAX Power's electrical system.

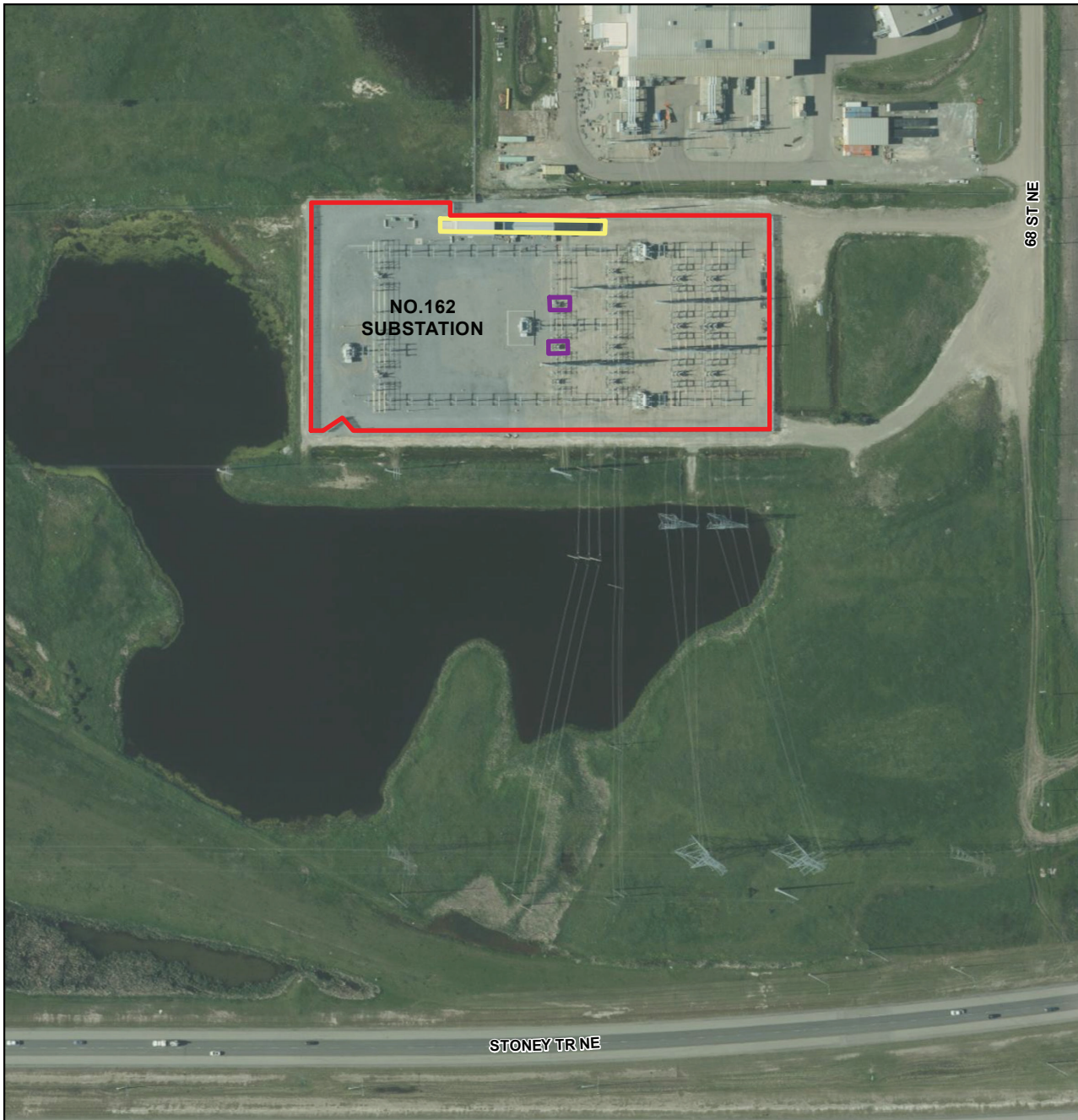
### PROPOSED SCHEDULE

ENMAX Power plans to file a Checklist Application with the AUC in Q4 2023. Subject to receiving approvals and the procurement of materials, construction is anticipated to begin in Q3 2024. Construction is anticipated to take approximately two months with a proposed in-service date in Q4 2024. We encourage stakeholders to consult the webpage for the most up-to-date construction information.

**For more than 100 years,  
ENMAX Power has delivered safe  
and reliable electricity in Calgary.**

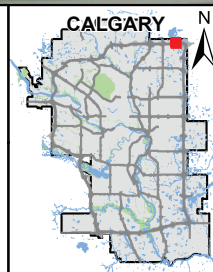
# ENMAX NO. 162 SUBSTATION

## Circuit Breaker Replacement

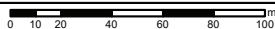


**ENMAX POWER**  
**No.162**  
**Substation**  
**Circuit Breaker**  
**Replacement**  
**Overview Map**

- Legend**
- Existing ENMAX Substation
  - Existing ENMAX Building
  - Proposed Circuit Breaker Replacement



1:2,500



September 2023



The data contained is for information purposes only. ENMAX Power Corporation does not make any representations or warranties as to the accuracy or completeness of the information contained herein or its verification. ENMAX does not guarantee that the information will not change at any time. This data is a representation of ENMAX owned and operated facilities only and may not depict the exact locations on the ground. This document is being furnished on a confidential basis and is not to be distributed to any other parties.

Data sources:  
 Civil and Circularity: ENMAX 2023;  
 Landbase, Orthophoto: City of Calgary 2023.

T:\GDrive\_ENMAX\_GISS\Enmax\_GIS\_Projects\Stakeholders\Sub162\_20150710\Sub\_162\_Stakeholder\_Overview\_box11\_20230929.mxd



# ENMAX NO. 162 SUBSTATION

## Circuit Breaker Replacement



Example of a Circuit Breaker

### CONSTRUCTION METHODS

The proposed construction activities will take place on lands owned by ENMAX Power, within the existing ENMAX No. 162 Substation fence line. Temporary access accommodations may be periodically required during construction. ENMAX Power will work with stakeholders and The City of Calgary to minimize the impact to residences, businesses and commuters in the area.

### POWER OUTAGES

There are no planned power outages impacting customers as part of the proposed work.

**Circuit Breaker:** the electrical equipment located in substations, designed to open and close a current-carrying circuit, and can be automatic or non-automatic.

**Substation:** an important component of electrical infrastructure that changes the voltage of electricity to make it suitable for use.

**Transient Recovery Voltage:** refers to voltage difference that develops across the terminals of a circuit breaker during operation.

# ENMAX NO. 162 SUBSTATION

## Circuit Breaker Replacement



### COMMITMENT TO COMMUNITY

ENMAX Power is committed to being a responsible corporate neighbour. Our commitment includes providing timely and meaningful engagement with stakeholders about our projects and applications. We provide opportunities for stakeholders, including residents, occupants and landowners, to be informed about our projects and applications, and to engage with us at all stages.

### ABOUT ENMAX CORPORATION

The ENMAX group of companies is a leading provider of electricity services, products and solutions. ENMAX Corporation (ENMAX) is headquartered in Calgary, Alberta, with operations across Alberta and Maine. Through its subsidiaries, ENMAX Power Corporation and Versant Power, ENMAX owns and operates transmission and distribution utilities that safely and reliably deliver electricity to customers in Calgary and northern and eastern Maine. Through ENMAX Energy Corporation, ENMAX owns and operates power generation facilities and offers a range of innovative electricity and natural gas products and services to residential, commercial and industrial customers across Alberta. ENMAX is a private corporation and The City of Calgary is its sole shareholder.

### CONTACT INFORMATION

Your input is valuable to us. We will ensure you get answers to your questions and that your concerns are understood. For more information about the Project, please contact:

#### ENMAX POWER CORPORATION

**Phone:** 403-514-1471

**E-mail:** [stakeholderrelations@enmax.com](mailto:stakeholderrelations@enmax.com)

**Website:** [enmax.com/No162substation](http://enmax.com/No162substation)

---

To learn more about the regulatory process, please contact:

#### ALBERTA UTILITIES COMMISSION

**Phone:** 403-310-4282

**Email:** [info@auc.ab.ca](mailto:info@auc.ab.ca)

**Website:** [auc.ab.ca](http://auc.ab.ca)