

# ENMAX NO. 21 SUBSTATION

## Transformer Replacement



### PROJECT OVERVIEW

ENMAX Power Corporation (ENMAX Power) owns and operates ENMAX No. 21 Substation, located at 5560 Strathcona Hill SW. ENMAX No. 21 Substation commenced operations over 60 years ago and provides electrical services to residential and commercial properties in Calgary's Strathcona Park area and surrounding communities.

ENMAX No. 21 Substation houses three transformers. Due to deteriorated asset condition, it has been determined that two transformers require replacement.

ENMAX Power intends to apply to the Alberta Utilities Commission (AUC) for approval to replace the transformers with two new transformers of the same capacity. The placement of these new transformers will be in close proximity to the current transformer locations and will require ENMAX Power to extend the southern substation fence line by approximately 24 meters (the Project). The Project will ensure the continued safe, reliable and efficient operation of ENMAX Power's electrical system.

### PROPOSED SCHEDULE

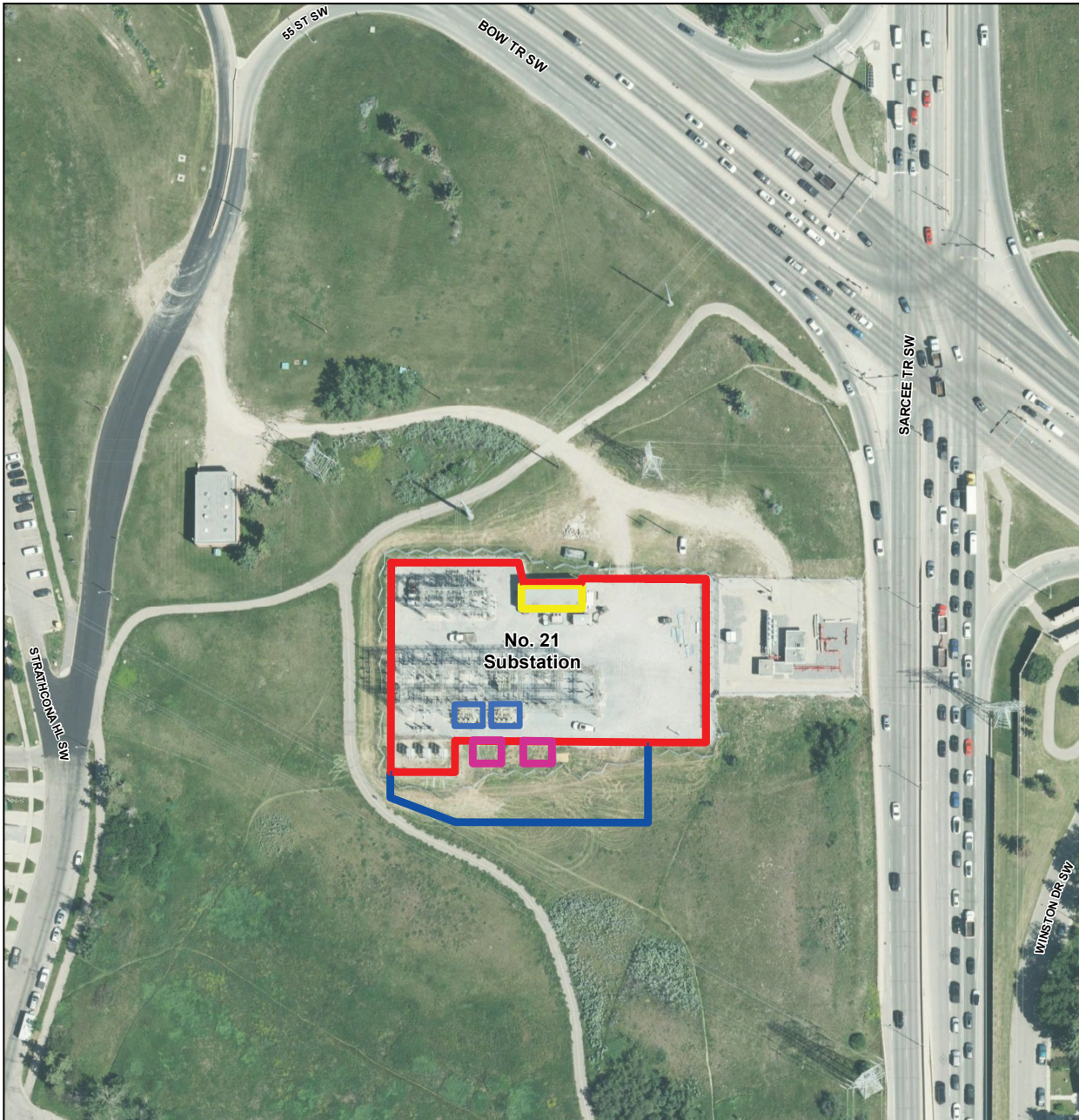
ENMAX Power plans to file a Checklist Application with the AUC in Q1 2024. Subject to receiving approvals and the procurement of materials, construction is anticipated to begin in Q4 2024. Construction is anticipated to take approximately 12 months with a proposed in-service date in Q4 2025. We encourage stakeholders to consult the webpage for the most up-to-date construction information.

**For more than 100 years,  
ENMAX Power has delivered safe  
and reliable electricity in Calgary.**



# ENMAX NO. 21 SUBSTATION

## Transformer Replacement



<p><b>No. 21 Substation Transformer Replacement</b></p> <p><b>Newsletter Map</b></p>	<p><b>Legend</b></p> <ul style="list-style-type: none"> <li><span style="display: inline-block; width: 15px; height: 10px; background-color: pink; border: 1px solid black; margin-right: 5px;"></span> Proposed Transformer Location</li> <li><span style="display: inline-block; width: 15px; height: 10px; background-color: red; border: 1px solid black; margin-right: 5px;"></span> Existing ENMAX Substation Fence-Line</li> <li><span style="display: inline-block; width: 15px; height: 10px; background-color: yellow; border: 1px solid black; margin-right: 5px;"></span> Existing Substation Building</li> <li><span style="display: inline-block; width: 15px; height: 10px; background-color: blue; border: 1px solid black; margin-right: 5px;"></span> Existing Transformer Location</li> <li><span style="display: inline-block; width: 15px; height: 10px; background-color: blue; border: 1px solid black; margin-right: 5px;"></span> Proposed Substation Fence-Line Extension</li> </ul>	<p>CALGARY</p> <p>N</p>
<p>1:1,500</p>		<p>January 2024</p>
<p></p> <p><small>The data contained is for information purposes only. ENMAX Power Corporation does not make any representations or warranties as to the accuracy or completeness of the information contained herein or its verification. ENMAX does not guarantee that the information will not change at any time. This data is a representation of ENMAX owned and operated facilities only and may not depict the exact locations on the ground. This document is being furnished on a confidential basis and is not to be distributed to any other parties.</small></p>		<p><small>Data sources: Civil and Circuity: ENMAX 2023; Landbase, Orthophoto: City of Calgary 2023.</small></p>

T:\Gdrive\_ENMAX\_GISS\Enmax\_GIS\_Projects\Stakeholders\Transformer replacement\_21 sub\_newsletter map and parcel map\_20230223\Substation\_Stakeholder\_Overview\_8x11\_20230808.mxd

# ENMAX NO. 21 SUBSTATION

## Transformer Replacement



Example of Transformer

### CONSTRUCTION METHODS

The proposed construction activities will take place on lands to be owned by ENMAX Power, within the expanded ENMAX No. 21 Substation fence line. Temporary access accommodations and pedestrian pathway closures may be periodically required during construction. ENMAX Power will work with stakeholders and The City of Calgary to minimize the impact to residences, businesses and commuters in the area.

### POWER OUTAGES

There are no planned power outages impacting customers as part of the proposed work.

**Substation:** A substation is an important component of electrical infrastructure that changes the voltage of electricity to make it suitable for use.

**Transformer:** Substation equipment that reduces the high voltage electricity coming in through transmission lines, to a lower voltage suitable to send through distribution lines.



# ENMAX NO. 21 SUBSTATION

## Transformer Replacement



### COMMITMENT TO COMMUNITY

ENMAX Power is committed to being a responsible corporate neighbour. Our commitment includes providing timely and meaningful engagement with stakeholders about our projects and applications. We provide opportunities for stakeholders, including residents, occupants and landowners, to be informed about our projects and applications, and to engage with us at all stages.

### ABOUT ENMAX CORPORATION

The ENMAX group of companies is a leading provider of electricity services, products and solutions. ENMAX Corporation (ENMAX) is headquartered in Calgary, Alberta, with operations across Alberta and Maine. Through its subsidiaries, ENMAX Power Corporation and Versant Power, ENMAX owns and operates transmission and distribution utilities that safely and reliably deliver electricity to customers in Calgary and northern and eastern Maine. Through ENMAX Energy Corporation, ENMAX owns and operates power generation facilities and offers a range of innovative electricity and natural gas products and services to residential, commercial and industrial customers across Alberta. ENMAX is a private corporation and The City of Calgary is its sole shareholder.

### CONTACT INFORMATION

Your input is valuable to us. We will ensure you get answers to your questions and that your concerns are understood. For more information about the proposed Project, please contact:

#### ENMAX POWER CORPORATION

**Phone:** 403-514-1471

**E-mail:** [stakeholderrelations@enmax.com](mailto:stakeholderrelations@enmax.com)

**Website:** [enmax.com/No21substation](http://enmax.com/No21substation)

---

To learn more about the regulatory process, please contact:

#### ALBERTA UTILITIES COMMISSION

**Phone:** 403-310-4282

**Email:** [info@auc.ab.ca](mailto:info@auc.ab.ca)

**Website:** [auc.ab.ca](http://auc.ab.ca)