

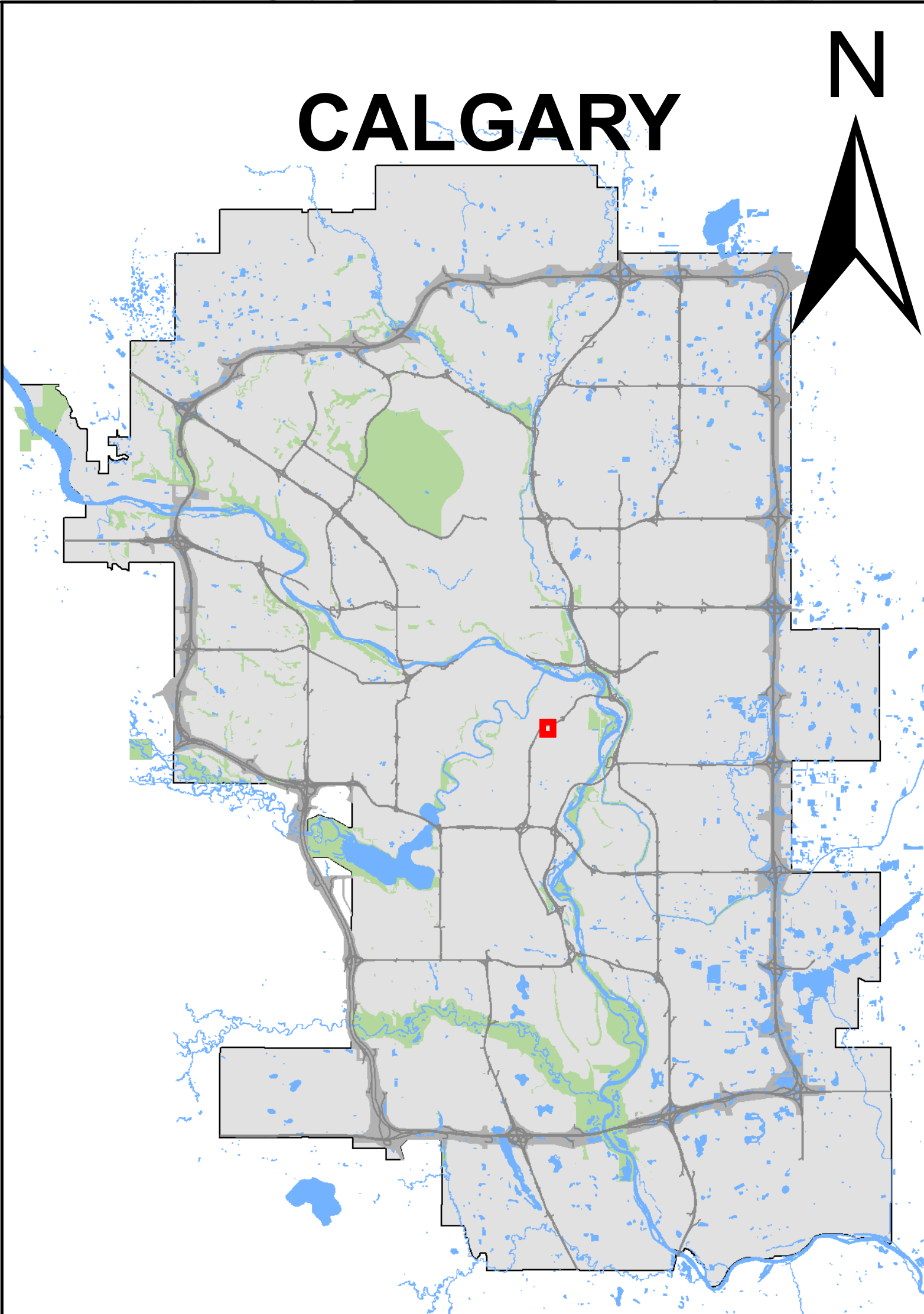


**CENTRAL CALGARY
Transmission Line
Replacement**

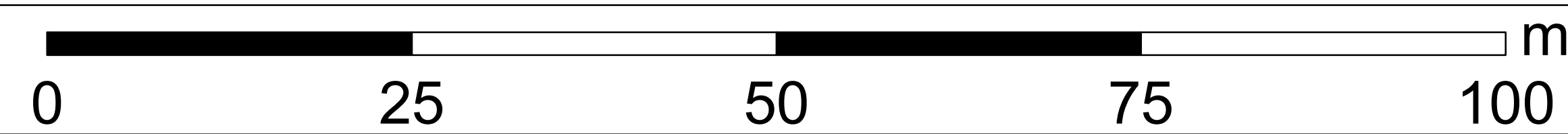
**Newsletter Map
No. 2 Substation /
Transmission Line
2.83L**

Legend

- Potential Transmission Routes**
- - - 2.85L Underground Route
- Existing Infrastructure**
- X Existing 2.83L Connection to be Removed
- Existing Transmission Steel Monopole
- ▲ Existing Transmission Wood Pole
- Existing Transmission Structure
- Existing 2.83L Connection to be Removed
- Existing Overhead Transmission Line
- - - Existing Underground Transmission Line
- Existing ENMAX Substation



1:350



March 2024

The data contained is for information purposes only. ENMAX Power Corporation does not make any representations or warranties as to the accuracy or completeness of the information contained herein or its verification. ENMAX does not guarantee that the information will not change at any time. This data is a representation of ENMAX owned and operated facilities only and may not depict the exact locations on the ground. This document is being furnished on a confidential basis and is not to be distributed to any other parties.

Data sources:
Civil and Circuitry: ENMAX 2024;
Landbase: City of Calgary 2024.